

822 BD97

received 10/2-98
from [unclear]
([unclear])

Hygiene, Sanitation & Water Supply in Rural Areas

Unofficial Translation: For Internal Use Only

Government of the People's Republic of Bangladesh
Ministry of Local Government, Rural Development and Co-operative
(Local Government Division)

Project Concept Paper

Hygiene, Sanitation and Water Supply in
Rural Areas (GOB-UNICEF)

Government of Bangladesh
Department of Public Health Engineering, Planning Division, Dhaka

Department of Public Health Engineering
April, 1997

Library
IRC International Water
and Sanitation Centre
Tel.: +31 70 30 689 80
Fax: +31 70 35 899 64

822-BD97-14986

Opinions on the basis of the Recommendations of the Pre-ECNEC meetings on Hygiene, Sanitation and Water Supply Development (GOB-UNICEF) in Rural Areas

Recommendations of the Pre-ECNEC meeting	Opinions/Remarks on the basis of Recommendations
a. Economic Relations Division (ERD) to take necessary steps in respect of raising Supplementary Funds together with UNICEF.	a. Ministry and DPHE to extend necessary co-operation in this respect.
b. Discuss again with UNICEF whether expenditure can be increased on physical constructions by reducing the same on "other investments" approved by UNICEF.	b. After discussion with the UNICEF Tk 47.25 million had been curtailed from "other investment" expenditure head and the fund for physical construction under the "Construction of water supply facilities and sanitary latrines in Primary School & Madrasha" has been increased. (PCP, Page 10 and 12 page number will be modified in the final version).
c. Short outlines of different Training heads shall have to be mentioned in the PCP.	c. Outlines of Training programmes are now mentioned in the PCP (N.B.. attachment).
d. Establishments burning wood as fuel in large chulas (viz, Hostels, BDR, Police Camps, hotels, restaurants etc.) should use smokeless systems, as devised by BCSIR, on a limited scale in their projects	d. The activities of the project in confined to rural areas. With a view to motivating the rural people, <u>demonstrations in rural UP Health Centres and EPI Centres</u> , on how to make and use smokeless chulas has been included Discussion was held about making large smokeless chulas in hostels, BDR, police camps, jails, hotels, restaurants etc. situated in rural areas using the fund of the project, but UNICEF did not give consent to it It should be mentioned here that there is provision for implementing such activities with the financial assistance of the project Under these circumstances, necessary technical assistance may be extended to the organizations willing to make large smokeless chulas at their own cost under this project
e. There shall be provision for Seven (7) Jeeps and Three (3) Speed-boats under the project However, evaluation of the present condition of the transport, formerly procured under different projects of UNICEF, will have to be attached to the PCP with necessary information	e. Provisions have been made for 7 Jeeps and 3 Speed-boats and information about the present condition of different transport previously collected from UNICEF are enclosed herewith (N.B attachment D)
f. There shall be a full time Project Director who will hold the rank and status of a Superintending Engineer.	f. The rank and status of Project Director is amended (N.B.attachment-Uma/2)

LIBRARY IRC
PO Box 93190, 2509 AD THE HAGUE
Tel.: +31 70 30 689 80
Fax: +31 70 35 899 64

BARCODE: 14986
LO: 822 BDD97

g The office of the Assistant Chief Engineer will be merged with the office of the Project Director and the posts of one Driver, one Record-Keeper, one Lower Division Clerk and one M.L.S.S, in the Asstt Chief Engineer's Office shall be abolished.	f Action taken as per decision (N B attachment -Uma/2).
h The staff strength of Natore office of the project shall be as follows:- Stores Wing - 22 Monitoring Cell - 5 R & D Division - 22	h. Action taken as per decision (N B.enc-Uma/5, Uma/7, & Uma/8)
i. 42 proposed posts of new Asstt. Engineers will remain under the project until the posts are created under Revenue Budget.	i Agreed
j From the Computers available under the project one(1) may be issued for the use of the Physical planning, Water Supply and Housing Wing of the Planning Commission. Besides, expenditure on furniture, accessories and machinery of the office, office rent, conveyance, maintenance, repairs, fuel for transport, incidentals, CD, VAT, inflation shall remain limited within the fund and expenditure proposed by the IMED	j. Actions taken as per decision (N.B page-16, 17 and 18 of PCP).
k In the year-wise Implementation Matrix of the PCP the amount from GOB and Project assistance should be shown separately.	k. As per decision the year-wise amount of assistance of GOB and the project have been shown separately.
l. The allocation of expenditure shown for consultants should be mentioned in the PCP	l. Allocation of expenditure for Consultants (pay allowances of UNICEF manpower) is enclosed (N.B.attachment-Ta)
m The number of range-set and kits shall have to be mentioned separately in the PCP.	m. Mentioned at page 20 of the PCP

CONTENTS

1.0	Project Summary	Page
1.1	Name of the Project	6
1.2	Concerned Ministry and implementing agency	6
1.3	Principal Objective and short background	6
1.4	Feasibility of the Project	13
1.5	Project Expenditure	13
1.6	Financing the Project	13
1.7	Expected Result of the Project Investment	15
1.8	Main sections of the Project and estimated expenditure thereof	15
	1.8.1 Manpower	15
	1.8.2 Physical Construction	15
	1.8.3 Transport	16
	1.8.4 Accessories & Machinery	16
	1.8.5 Land	17
	1.8.6 Advisors/Consultants	17
	1.8.7 Other Investment Expenditure	17
1.9.	Expected Benefits of the Project	
	1.9.1 Organizational	18
	1.9.2 Production Oriented	19
	1.9.3 Employment	19
	1.9.4 Socio-economic	19
	1.9.5 Gender Development	19
	1.9.6 Environmental	19
1.10	Annual Revenue Expenditure after the completion of the project	19
1.11	Project Implementation Period	20
1.12	Project Location	20
1.13	Other (Auxiliary, subscription etc.)	20

2.0	Enclosures	
2.1	Project Implementation Matrix (Attachment-Ka)	23-26
2.2	Distribution of annual work-plan of different types of Tube-wells and other structures (Attachment-Kha)	27
2.3	Area-wise annual distribution of physical work-plan of different kinds of sources of water and other structures (technical aspects) [Enc- Ga]	28-29
2.4	List of Districts and Thanas covered by the Project (Enc-Gha)	29-32
2.5	Proposed Human Resources Structure and detailed description (Enc-Uma)	33-40
2.6	Item-wise expenditure under different heads (Enc-Cha)	41
2.7	Steering Committee (Enc-Chhay)	42
2.8	District-wise projected population (Enc-Ja)	43-44
2.9	Projected population according to technology till 2000 AD (Enc-Jha).	45-46
2.10	Demand of different kinds of Tube-wells till 2000 AD.(Enc-Knio)	47-49
2.11	Minutes of the meeting held on 27th July'96 (Enc-Ta)	49-53
2.12	Brief outline of training's/programmes under the Project (Enc-Tha)	53
2.13	Status of UNICEF supplied transport in DPHE (Enc-DA)	54
2.14	Expenditure report on UNICEF manpower (pay and allowances) [Enc-Dha]	54
2.15	Recommendations of the IME Division (Enc-Na)	55-59
2.16	Decisions of the Pre-ECNEC Meeting (Enc-Taa)	60-68

PROJECT SUMMARY

(Project Concept Paper-PCP)

1. Name of the Project

Hygiene, Sanitation and Water Supply Project in Rural Areas (GOB-UNICEF)

2. Concerned Ministry and Implementing agency

Ministry of Local Government, Rural Development and Co-operative (Local Government Division),
Department of Public Health Engineering

3. Principal objectives and Background

Objectives

Many people living in the rural areas of Bangladesh do not yet have access to safe drinking water and Sanitation. Within the purview of this Project, the objectives are:

- 1 to ensure access to safe water sources among 9.88 million people by sinking 52,000 Tara tubewells in Low Water Table (LWT) areas, and thereby changing the present ratio (1995) of people per tubewell from 252 to 190
- 2 to change the present ratio (1995) of users per deep tube-well from 185 to 175 by installation of 7,860 tube-wells, and other schemes in the Coastal Belt, thereby to ensure access to safe water supply sources among 1.37 million people
- 3 to sink 2,675 tube-wells and ring-wells in the Chittagong Hill Tracts (CHT), and rocky areas, and reduce the present ratio (1995) of users per tube-well or other source from 84 to 70, thereby bringing 190,000 people under safe water supply systems.
- 4 to increase the use of people to sanitary latrines from 45 percent (1995) to 80 percent
- 5 to increase the personal hygiene, mainly washing of hands with soap or ashes before eating and after defecation to 80 percent.

In addition, programmes have been designed for ensuring access to safe water and sanitation in accordance with the Convention on the Rights of the Child and in support of Agenda 21 approved at the Earth Summit 1992, concerning preservation and improvement of the environment.

The principal objective of this project is to raise the standard of living, especially of women and children, by reducing the incidences of diarrhoea, through safe water, sanitation and hygiene education.

Background

Prior to initiating this Programme (1996-2000), the Government of Bangladesh, in co-operation with UNICEF, conducted a situation analysis of rural water supply and sanitation. The study showed that the incidences of diarrhoea diseases were not significantly reduced in spite of the improvement in water supply and sanitation facilities. Inadequate personal hygiene and sanitary means of excreta disposal are inseparably related to this phenomenon. The estimated amount of 25,000 metric tons of faeces is unsafely disposed of every day causing serious health risks for large segments of the population. A

majority of the people thinks that diarrhoea can be checked only by drinking clean water. But they have very little knowledge about the fact that the absence of proper sanitation facilities and poor hygienic practice are primary causes of diarrhoea.

3) According to the study, only 16% of the people surveyed use tube-well water for all domestic purposes, and most of the people use impure/polluted water for all other purposes, as a result of which the chances of being attacked with diseases increase. On an average, a Bangladeshi child under five years of age suffers from malnutrition on account of 3-5 incidences of diarrhoea every year.

4) Water supply coverage in the rural areas of the country has increased as a result of ceaseless efforts. At present, there are more than 900,000 government tube-wells, and about 1.6 million non-government shallow tube-wells in the country. In rural areas, 85% people get water from a safe source within 150 meters of their house, 99 percent people drink water from such a source. A large number of tube-wells, however do not operate in the summer season because water level goes below the reach of these tube-wells on account of excessive use of ground water for irrigation. According to the study, about 30% rural areas will fall under this low-water table phenomenon by the year 2000 AD, and people become victims of various diseases by being forced to use unsafe water from nearby ponds, canals etc.

Handwritten note: ready approach (A)

The situation has improved on account of the participation of women in tube-well operation and maintenance and in site selection for tube-wells and sanitation. The Project will achieve greater success if more and more women participate on these processes. Six female tube-well mechanics have, for the first time, been appointed by the Department of Public Health Engineering.

Based on the analysis of the sanitation coverage in rural areas, 38% of the people use hanging latrines, and 20% people discharge excreta in open places. Only 10% of children (under 5) use sanitary latrines and about 20% of people wash hands with soap after defecation. As a result of increased consciousness among rural people and better access to low cost sanitary latrines including home-made latrines, the sanitation coverage increased from 16% in 1990 upto 48% in 1995. 35% of the users are making home-made pit latrines by spending less than Taka 100.

5) 50% of rural primary schools do not have hygienic latrines and safe water supply facilities. For want of sanitary latrines, the attendance of girl students decreases. When the boys and girls studying at school do not develop proper sanitation and hygiene behavior, it becomes difficult for them to change these habits when they grow up.

6) Since 1991 private producers have set up 3,231 sanitary latrine centres more than double of the previous number. On the other hand, difficulties in marketing by DPHE Village Sanitary Centres, excessive transport cost because of the distance to production centres, and the big difference in cost charged by private producers, the sale of latrines is moving at a slow pace. The Social Mobilization Project through mass media played a positive role in the sale of sanitary latrines, but health education has not received the same priority. Acceptability of home made latrines is remarkable among low income group. At many places, home made latrines have become the first stage to adapting improved sanitary latrines due to intensive social mobilization campaign. It is expected that influencing the rural women will be easier if female motivators are appointed in the field of sanitation. The expected goal/objective will be achieved if sanitation, hygiene and water supply programmes are implemented in an integrated manner.

7) In the light of the study, and on the grounds of active private sector engagement in rural water supply and sanitation activities, as a new strategy, UNICEF withdrew assistance towards the sinking of shallow tubewells, resinking of inoperative tubewells and also the production of rural sanitary latrines. However, assurance of assistance is given by UNICEF for rural water supply and sanitation improvements in the following manner:

9) In 181 Thanas of Bangladesh, where ground water level has gone down below 25 feet (7.5 metres), i.e. in low water table areas (LWTA), and where water supply system does not exist (unserved), or water supply is inadequate (under-served), UNICEF will help in sinking 52,000 Tara Pumps.

- ☞ In 65 unserved and under served Thanas of the Coastal Belt districts, excluding Noakhali, Feni, Patuakhali and Barguna, UNICEF will assist sinking 6,000 deep tube-wells and in constructing 1,860 other sources of water.
- ☞ In 25 rural Thanas of Chittagong Hill Tracts, where there is inadequate or no safe water supply arrangement, UNICEF will help in sinking 800 Tara, 400 Tara 2/Tara-dev 800 deep tube-wells and also in the construction of other water supply schemes. Other rocky areas will also be included in this project.
- ☞ To assist in awareness creation, demonstration latrines and smokeless chulas will be constructed in 10,000 EPI outreach centres.
- ☞ To assist in national development by involving the future generation and to promote hygiene, improved sanitation and safe water use, the construction of sanitary latrines and installation of safe water sources will be carried out in Primary Schools and Madrasahs
- ☞ To assist in the improvement of household environment and health, the construction of demonstration latrines, water supply facilities and smokeless chulas will be implemented in 600 Union Health Centres.
- ☞ To help achieve the desired objective of universal access by 2000 AD, raise awareness of 11.4 million homes towards self-motivation in construction of sanitary latrines, improvement in personal hygiene practice and use of safe water for all domestic purposes
- ☞ Generally, the ovens used in rural areas are less effective, consume more fuel and emit more smoke resulting in the respiratory problems in children, this condition can be improved by using smokeless chulas which saves the consumption of fuel and reduces the damage of environment, save environments from fatal diseases To spread this technology, smokeless chulas will be demonstrated in 10,000 EPI outreach centres and self-motivated enterprises will be promoted. The effectiveness and acceptability of this technology will be assessed before scaling up in rural areas.

7
0
private sector.

Project Planning

District-wise Project Planning

District Executive Engineers from the Department of Public Health Engineering , with the help of their Sub-Assistant Engineers (SAEs) stationed in Thanas, will ascertain the demand of water supply, sanitation and hygiene practices and will prepare plans on these basis. The head office of the Department of Public Health Engineering (DPHE), in collaboration with the Superintending Engineers will assess the demands, give district-wise allocation in the light of ADPs, giving preference to underserved districts The major strategy/focus of this plan are as follows

- ☞ The activities of this project will be implemented all over the country except in the 5 coastal districts included in DANIDA Programmes
- ☞ In the first year, 14 districts will be included in the intensive Sanitation and Hygiene Education Programme.
- ☞ Later on, 13 districts will be added to the programme every year With the inclusion of new districts, the activities implemented in the preceding year shall be reviewed.

National Project Planning

Social Mobilization and skills training for active participation of communities will be undertaken on national basis Water supply interventions shall focus in underserved areas on a priority basis

demand based app.

participatory

participatory approach

Project Strategy

Manpower improvement

With the objective of fulfilling future demand more successfully and making the staff of the Department of Public Health Engineering stronger and effective, importance will be given to leadership training, planning, management and implementation; social mobilization & training, monitoring and evaluation; financial management; research and development; and gender sensitivity.

- ☛ In this respect, arrangement will be made for annual conference on social mobilization and mass communication. Training will be given to government policy makers, field level staff, Union Parishad Chairmen, Members of WATSAN Committee and teachers. The aim of the training is to increase awareness and information dissemination
- ☛ Training on geophysical survey technique/methods for the Hydro geologists of DPHE will be included in this programme.

Strengthening relations with NGOs and the private sector

DPHE will encourage the activities of NGOs and the private sector in the field of water supply, sanitation and hygiene. Local manufacture and production of WATSAN facilities will be promoted.

Manufacturers of No 6 Pumps and Tara pumps will be encouraged to produce products as per specification of BSTI. Necessary guidelines will be offered in the light of the experience of DPHE and UNICEF with the manufacturers.

Research and Development

- a. Research will be conducted for the development of sanitary latrines at low cost. In order to protect the latrines from rain and floods, prototype of better latrines will be developed. Evaluation of the effectiveness of offset pit latrines will be conducted, and tests will be made to innovate appropriate designs. Participatory action research methodology will be applied to determine where human waste could be used for manure. Two-pit latrines, use of gas and smokeless chulla will be included in the project.
- b. Experiments will be conducted to see if direct action could be replaced by lever-action while operating Tara Pumps
- c. On the basis of field survey studies, a manual for operation and maintenance of Tara-2 pump will be developed.
- d. On the basis of the forecast of decline in ground water table, the R & D unit will experiment with the effectiveness of wind or solar power driven pumps.
- e. Necessary data will be analyzed to ascertain the depth of iron free water aquifers for tube-wells.
- f. Attempts will be made to improve technology of infiltration gallery in the hilly areas.

Community participation in the project

The user family will install sanitary latrine at their own cost. The consumers of water will bear partial cost for the water supply facilities. The cost of latrines, water supply and smokeless chullas for schools/union health centres and EPI centers will be met from the project.

At the planning and implementation stages, efforts/steps will be taken to ensure active participation of men and women as well as gender and social equity.

Special emphasis will be given on the increase of skills and participation in decision-making by females. Attempts will be made to make the project effective and fruitful through the participation of the community and private sector.

Awareness about Environmental Protection

With a view to increasing mass awareness and a Database will be established with the assistance of the Ministry of Environment to disseminate information on different aspects of environmental pollution - such as - use of chemical/fertilizers/ pesticides for agricultural purpose, arsenic pollution, use of insecticides, industrial waste etc, so that people can take necessary steps. Other international organization, specially WHO will be associated with this project.

Project Management

DPHE will implement the project in co-operation with other government agencies, private institutions, NGOs and communities. There will be one full time Project Director, who will co-ordinate the activities through the Superintending Engineers of the regional circles. The Executive Engineers of DPHE will supervise and evaluate the primary planning and implementation of the project and monitor the activities of partners. From the central level, the Training Division, Monitoring Division and Research and Development Division of DPHE will provide information and technical support to the field level.

UNICEF will collaborate with DPHE in the following areas.

Develop/provide guidelines and technical assistance, increase public and awareness through social mobilization, research and development; assess needs/demand; monitoring and evaluation. DPHE and UNICEF will jointly prepare annual work plans. Besides, UNICEF will provide DPHE necessary assistance in co-ordinating and supervising the activities of NGOs and other allies while implementing the project at the field level.

The school sanitation programme will be implemented through the School/Madrasha Management Committee. In case of inability of SMCs, DPHE will implement the programme in accordance with the existing rules.

The activities of the project will be coordinated through a Steering Committee at the Ministry level.

Monitoring & Evaluation

Apart from its own arrangement, DPHE will monitor district level operations in collaboration with the partners. The main indicators for monitoring will be :

Number of sanitary latrines constructed and used; number of people washing hands with soap/ashes before handling food, before meal, and after defecation and the number of people using safe water for drinking, and other domestic purposes. The processes linked to implementation such as sinking of tube-well, training etc will be also be monitored.

Implementation

Community based process will be adopted. Field level workers will monitor the progress through courtyard-meeting and group discussion. Each member, male or female, will provide information on monthly progress of his/her respective area. Thana level Sub-Assistant Engineers of DPHE will consolidate the available information. The Executive Engineer will consolidate the data of the district, bring it to the notice of the Superintending Engineer of the Circle, and review the progress with their

thana and district level colleagues. There will be arrangement for quarterly inspection of selected sites so that clear idea of field level situation can be assessed. The zonal review committee of DPHE headed by the Superintending Engineer will review the progress on quarterly basis. DPHE headquarters will exchange views with field level workers and prepare monthly report about the progress in thanas and districts.

UNICEF field monitors will inspect the quality of different installations, training and orientation, and take part in district and regional meetings. UNICEF, Dhaka will discuss monthly and quarterly progress with LGRD and DPHE. DPHE in collaboration with UNICEF will initiate different studies and surveys for helping the field level monitoring. The study and survey will include:

Assessment of the effectiveness of communication package; appropriateness of technology, public opinion about different activities; application of techniques; behavioral change of people and extent of their knowledge etc. The findings will later on be used for more effective allocation of resources or change of strategy.

Collaboration with other allies

Government and non-government organization

It will be necessary to motivate Health and other collaborating ministries and non-governmental organizations to provide assistance for mass mobilization on sanitation and hygiene. Other co-operating partners include schools, religious leaders, Rotarians and local clubs.

International and bilateral organizations

DPHE, World Bank, DANIDA will collaborate, as in the Rajshahi Division to coordinate activities related to operation and maintenance. The collaboration effort in developing water supplies and sanitation activities shall be extended to other U N and bilateral organizations as well.

Collaboration with Education and Health Projects

Sanitation, Hygiene and Water Supply Programmes largely aim at health awareness and the change of habits. Therefore, collaboration with education and health projects is necessary. Within the purview of this Project Strategy, it had been planned that the schools will act as resource centres for behavioural development and change. Similarly UP Health Complex and EPI Centres will also provide demonstrations for development of Sanitation and Hygiene.

Note In the light of GOB-UNICEF Country Programme of 1996-2000, a draft copy of the outline of this Project was sent to concerned Section of UNICEF in December, 1995. After receiving opinion from UNICEF in January/1996, the Project summary was sent to the Ministry in April, 1996. Later a meeting on the Project Concept Paper (PCP) took place in the Office of the Director General of Local Government Division. According to the discussion of that meeting, and on the basis of Local Government Division's Memo No LG/RO-1/DPHE-18/96/216, dated 20/5/96; the draft PCP was revised. Later, in the light of the meeting held in the Ministry on 3/7/96 and on the basis of letters no. WES-IMP/401, dated 4/7/96 and WES-CP/411, dated 7/7/96, the Project Concept Paper(PCP) was again revised and submitted, office Memo No 2812/PHEO, dated 16/7/96. Afterwards it was edited, Memo No LG/RO-1/DPHE-18/94/(Ao.-1)/370, dated 6/8/96 of the Local Government Division. Now the Project Concept Paper(PCP) has been drafted according to the decision of the Pre-ECNEC meeting held on 10/3/1997.

4. If the feasibility study of the project had been carried out, the summary of its Recommendations should be enclosed

No separate feasibility study is necessary nor was it done for compiling the project. Area-wise concept has been selected on the basis of information filed in the Ground Water Circle of DPHE, and at the time of compiling the project due consideration was given to the Recommendations of GOB-UNICEF Country programme 1996-2000

5. Consistency with the aim, objectives, sector-wise allocation and policy of the Five Year Plan

Overall health and environmental protection through the provision of safe drinking water and sanitation facilities and the prevention of faecal and water born diseases, are consistent with the main aims and objects of the Five Year Plan.

6. Project Expenditure (in lakh Taka)

Local Currency	:	10,765.77
Foreign currency	:	10,981.22
Total	:	21,746.99

7. Financing the project

		<u>Loan</u>	<u>Grant</u>	<u>Total</u>	<u>Source</u>
a	Local	--	8,936.84	8,936.84	GOB
b	Foreign Aid	--	12,810.15	12,810.15	UNICEF

(Amount of re-allocable foreign aid Tk. 1,828.93 lakh.)

Note: US\$ 1 = Taka 41

8. Impact / results of project investment

Financial and economic

The project will improve condition and standard of public health and environment in the rural areas of Bangladesh, especially of the children and women, by improving the sanitation facilities, personal hygiene, safe environmental, and supply of safe drinking water. A "Z-Type", i.e. "service welfare project", is not applicable.

9. Main components of the project and estimated expenditure

9.1 Manpower (Details in Annex-E)

Sl No	Description	No of posts	Total annual income from GOB (in Lakh Taka)
1	Office of the Project Director	30	20.89
2.	Assistant Engineer in 42 new Districts	42	35.28
3	Executive Engineer, Training Division	7	5.88
4.	Executive Engineer, Natore Stores Division.	22	12.08
5	Operation Manager (Sr. & Engg.), Computer	4	3.91
6	Executive Engineer, R & D Division	22	12.16
7.	Executive, Monitoring Division	5	3.73
8.	Chittagong Hill Tracts G.O.- Electric team	11	5.41
	Total	143	99.34

Total expenditure in 4 years = 99.34 X 4 = 397.36 Lakh taka which is 1.82% of total project expenditure

9.2 Physical Construction

(Lakh Taka)

Sl. No	Name of the item	Number 1 qty	Project Aid		Taka (GOB)	Total expenditure
			Total	Cash component		
1.	Sinking Shallow Tube-well	800	20.66	-	14.11	34.77
2.	Sinking Deep Tube-well	6,000	533.82	-	1,620.00	2,153.82
3.	Sinking Tara Tube-well	50,800	2,374.39	-	2,791.46	5,165.85
4	Sinking Tara-2 Tube-well	2,400	136.78	-	131.88	268.66
5	Digging Ring well	500	34.86	-	261.62	296.48
6	Setting up P.S.F.	600	36.16	-	138.71	178.87
7	Setting up S.S.T	200	4.18	-	12.75	16.92
8	Setting up V.S.S.T.	1,000	18.96	-	45.20	64.06
9	Construction of I.R.P.	950	16.75	-	57.00	73.75
10.	Reservoir for rain water storage construction	110	225.50	-	132.00	357.50
11.	Construction of infiltration gallery	100	10.46	2.37	-	10.46
12.	Construction of gravity feed system	25	5.23	3.14	-	5.23
13.	Construction of water sources, Latrines and smokeless chulla in U.P. Health Centres	600	215.00	178.17	-	215.00
14	Construction of demonstrations latrines and smokeless chulla in E.P.I. centres.	10,000	350.00	350.00	-	350.00
15	Construction of water sources and sanitary latrines in primary Schools and Madrasahs	10,350	3,622.50	-	-	3,622.50
Total			7,605.25	533.68	5,204.73	12,813.87

Physical construction. 58.91 % of total project cost = 12,813.87 lakh taka.

Note : Money reserved for R.P head will be spent according to the plan/budget of DPHE and UNICEF.

9.3 Transport (Category wise):

(Lakh Taka)

Description	Number	GOB
Jeep	7 nos	126.00
Speed boat	3 nos	16.50
Total	10 nos	142.50

Cost under Transport line item: 0.65% of total project cost = 142.50 lakh taka.

9.4. Office furniture, accessories & machineries:

Sl. No.	Description	Number	Total
1.	Printer Computer	3	6.00
2.	Photocopier	3	5.50
3.	Fax Machine	1	0.75
4.	Air cooler (for Computer)	2	2.00
5.	Telephone connection	9 sets	2.00
6.	Machinery, maintenance and telephone, electricity bill	Lump sum	16.25
7.	Furniture	Lump sum	10.00
	Total		42.50

Cost under this line item is 0.19% of total cost.

- Note :**
1. As per decision of PRE-ECNEC meeting, 1 (one) computer will be issued to for Physical Planning, Water Supply & Housing Wing at the Planning Commission, GOB
 2. Officers drawing pay in the scale of Taka 6,300-8,050 or above will be entitled to telephones in office and residence. The number of such officers under this project is eight (8). Sixteen (16) telephone sets are necessary for 8 officers. At present there are 7 sets, 9 more sets will be necessary.

9.5 **Size of Land (Hectares)** - Nil Pre cent of total project cost - Nil

9.6 **Consultancy**

Local and international (pay and allowances of UNICEF manpower)	Tk. 984.00 Lakh (P.A)	
	Per cent of total project cost	- 4.50%
	Percentage of P A. allotment	- 7.68%

9.7 Other Costs : (in Lakh taka)

Sl. No	Name of Organization (Item)	Project Aid		GOB contribution (Taka)	Total Cost
		Total	Cash component		
A. Training					
1	Training of Caretaker of tube-well & other water sources	143.50	143.50	-	143.50
2	Training related to primary school programme	326.00	163.00	-	326.00
3	Training of rural community, specially women for making smokeless chula.	143.50	-	-	143.50
4	Human Resource and Institutional Development	246.00	-	-	246.00
5	Training of other associated institutions	61.50	-	-	61.50
6	Training of DPHE staff, field level workers and change agents about sanitation and hygiene	900.00	205.00	-	900.00
7	Training of private tube-well mechanics	53.00	53.00	-	53.00
B. Establishment assistance					
8.	Mobilization of other allies	700.00	205.00	-	700.00
9.	Supply of Nail Clipper in Schools & Madrasahs.	250.00	-	-	250.00
10	Motivation Materials (TV spot/Radio spot, Slide, Flip chart, communication materials etc)	700.00	222.00	-	700.00
11	Training and Technical assistance to WATSAN committee	246.00	246.00	-	246.00
C. Research & Development					
12	Research & Development on appropriate technology for sanitation	41.00	20.50	-	41.50
13	Research & Development on water supply	61.50	30.75	-	61.50
14.	Monitoring, evaluation and studies	258.50	-	-	258.50
15	Periodic survey and evaluation by UNICEF	90.50	-	-	90.50
D. Miscellaneous					
16.	Office rent				
17.	Transport				
18	Conveyance maintenance, repair & fuel				
19	Incidental				
Total Cost		Percentage of Project Cost			

9.8	CD and VAT (on goods and machineries to be imported by UNICEF)	Tk 1500,00 lakh 6.9% of Total Project cost
------------	---	---

NOTE . Taka 61 50 lakh as VAT for Local purchases by UNICEF has been included

9.9	Inflation (5% of Physical Infrastructure)	Tk 550.00 lakh 2.53% of Total Project cost
------------	--	---

10. Equipment, furniture, accessories and machinery for implementing the Project

The beneficiary will carry out operations, repair and maintenance at their own cost

Percentage of O & M cost after completion of the Project : Nil

11. Expected impact of the Project

- a. Institutional Proposal has been submitted for 162 Officers and other staff including the Project Director for the implementation and supervision of this Project in low water table areas, coastal areas and Chittagong Hill Tract (CHT), so to say in the whole of Bangladesh. For completing the Project, in 1995-96 fiscal year, manpower of UNICEF assisted Projects will be absorbed within the proposed strength
- b. Productive capability: As a result of the implementation of the Project, the productive capability will be increased. Improvement in public health will enhance overall production activities
- c. Financial and Employment: The Project will provide scope for providing temporary jobs to about 11 million day labourers. Besides, temporary employment will be created for transporting goods, making smokeless chulla etc. Local industries for production of pipes, pumps and spare parts will flourish, resulting in job opportunities, better health at the rural level will be ensured. In view of flourishing market for spare parts on a large scale, permanent job positions will be created
- d. At grass-root level. Comprehensive employment opportunities will be available during the implementation of the Project. The conditions of the unemployed and poverty-stricken people will improve as a result of additional facilities, safe water and latrines under the Project ushering thereby better standard of living
- e. Gender Development: The women will be particularly benefited after the completion of this Project. A large number of female workers will be employed. Time spent for fetching water will be saved and they would be able to devote more time to income generating activities. After training, they themselves will be able to repair tube-wells, make smokeless chula, construct and use latrines and promote sanitation and community hygiene
- f. Environmental. Most important elements that contribute to clean environment are. Use of Safe water, use of Sanitary latrines and personal health & environmental cleanliness. As sanitation, hygiene practice and water supply core packaged as an integrated programme in this Project, it will have a positive effect on local society

12. Annual Project Revenue Expenditure, after Initiation of the Project

a	Total revenue expenditure	:	Tk. 125.00 lakh
	Expenditure/salary according to pay scale for high officials and employees	:	Tk. 108.64 lakh
	Other revenue expenditure (Fuel, maintenance etc.)	:	Tk. 16.36 lakh

Tube-well maintenance cost will be borne by the Users. Expenditure from Government revenue, after initiation, completion of the Project will be needed for cars, use of jeeps, speed boat etc for field level inspection, providing technical assistance to supervisors, preservation of monitoring records and to establish quick communication, and to dispatch spare parts on emergency basis as relief during at the time of flood, cyclone and other

b.	Income	:	As auxiliary subscription Tk. 1125.40 lakh.
----	--------	---	--

13. Project Implementation Time period

July, 1996 - June, 2000 AD.

14. Location of the Project

Coastal districts and Chittagong Hill Tracts (CHT). Low Water Table (unserved and underserved pockets of Noakhali, Feni, Laxmipur, Patuakhali and Barguna). [Details in Annex - D]

15. List of Projects, implemented or scheduled to be implemented with similar objectives and summary of their evaluation

Overall evaluation will be under taken after completion of Five (5) similar Projects in June, 1998 with UNICEF assistance.

16. Other special relevant information, if any

Beneficiary contributions will be realized from the public at the following rate :

Shallow tube-well	Tk 1000.00	P.S.F	Tk. 4000.00
Deep tube-well	Tk 4000.00	V.S.S.T	Tk. 1500.00
Tara tube-well	Tk. 1500.00	S.S.T.	Tk 1500.00
Tara-2 tube-well	Tk 1500.00	I.R.P.	Tk 1000.00
Ringwell	Tk 2500.00	Collection of rain water and reservoir	Tk. 14000.00

According to the decision of the meeting held on 27/07/96, [Annex - E] with the Hon'ble Minister of Local Government, Rural Development and Co-operatives in the chair, the amount of contribution money for

sinking tube-well will remain the same as in previous years during fiscal year 1996-97, UNICEF also agreed to this arrangement.

Shallow tube-well	Tk. 700.00	P.S.F.	Tk 2000.00
Deep tube-well	Tk. 2000.00	V S S T.	Tk 700.00
Tara tube-well	Tk. 1000 00	S.S.T	Tk. 700.00
Tara-2 tube-well	Tk. 1000 00	*I.R P	---
Ringwell	Tk 1000.00	*Rainwater collection and reservoir harvesting	---

Until the feasibility of the Mini Tara technology is fully assessed, there are two options available for Water installation/establishment in the Low Water Table area. Option-1 includes 20,000 Tara, 46,000 Mini Tara, 1900 Tara-2 and 500 IPRP. Under Option-2, there are 50,000 Tara, 20,000 Tara-2 and 800 IPRP. Option-2 has been included in the current PCP. Mini Tara technology is found to be acceptable then option 1 may be applied and work may be completed within the estimated Project cost.

For implementing field level activities, cost if and when the tube-wells materials received as P A has to reflect the market price during the implementation period.

Fund reserved for R P A. head will be spent according to the workplan/budget of UNICEF and DPHE

For Local Consultancies, the budget of DPA will be spent as Staff expenditure of UNICEF. At field level, training programme will be conducted jointly.

Intensive Social Mobilization Project will be undertaken through co-ordination with different government agencies and non-government organizations.

The cost of Range set (13,950 nos) and Kit - A (58,700 nos), for distribution during caretakers training programme has been included in P.A head for tube-well sinking

Arrangement has been made for training of Caretakers of tube-wells and smokeless chulas, so that the users themselves can maintain and repair the tube-wells, and people are motivated to construct and use latrines and smokeless chulas and also look after personal health There are provisions for demonstration latrines and smokeless oven in public places.

Service charge will be levied on users of latrines in Union Health Centres for proper maintenance There will be a Managing Unit for this

Immediately after installation of Water-sources, training on operation and maintenance will be given in the first phase to members of ten beneficiary families (10 male and 10 female) from among the users at grassroots level Taka fifty only will be given as allowance of Trainer

* Contribution money to I R.P at present . It is to be noted that "Rain Water harvesting has been proposed under this Project for the first time

Tara tube-well sinking, The second phase of Caretakers training will be imparted in conjunction with Tara Pump installation. It will be carried out on group basis. A team of 15 Caretakers will be assembled (in groups of 2 (one male and one female)). Training on operation and maintenance will include learning by doing. They will also acquire knowledge on health education, personal hygiene, and use of sanitary latrines. Taka 900 will be offered as allowance for each group.

Sd.

(Amanullah-Al-Mahmud) Executive Engineer
Directorate of Public Health Engineering
Planning Division, Dhaka.

Sd.

(M A B. Siddique)
Additional Chief Engineer
DPHE, Government of Bangladesh
Dhaka

Sd.

(Farid Uddin Ahmed Miah)
Superintending Engineer
Directorate of Public Health Engineering
Planning Circle, Dhaka

Sd.

(Amin Uddin Ahmed)
Chief Engineer
Directorate of Public Health Engineering
Government of Bangladesh, Dhaka

Sd.

Director General
Local Government Division
Ministry of Local Government
Rural Development and Co-operations

PROJECT IMPLEMENTATION MATRIX

Name of the project primary Environmental care : Hygiene, Sanitation & Water supply in rural area

SI No	Item of Works	Total Physical	Total Estimated Cost			Weigh -tage	Physical	Proposed 1996-97			Physical	Proposed 1997-98		
			GOB	PA	Total			Financial				Financial		
								GOB	PA	Total		GOB	PA	Total
1	Manpower	143 nos	397.36		397.36	0 018	143 nos	60 00		60.00	143 nos	100 00		
2	Physical Construction													
	a. Sinking of Shallow T/W	800 nos	14 11	20 66	34.77	0.002	200 nos				200 nos	3.53	5.17	
	b Sinking of Deep T/W	6000 nos	1620.00	533.82	2153.82	0.099	1700 nos	54 00	17.80	71.80	1700 nos	459.00	151.25	
	c. Sinking of Tara T/W	50800 nos	2791.46	2374 39	5165.85	0.238	13200 nos	54.95	46.74	101.69	13200 nos	725 34	616.97	
	d Sinking of Tara-II T/W	2400 nos	131.88	136.78	268 66	0.012	600 nos				600 nos	32.97	34.19	
	e. Construction of Ringwell	500 nos	261.62	34.86	296.48	0 014	150 nos				150 nos	78.49	10.46	
	f Construction of PSF	600 nos	138.71	36.16	174 87	0.008	180 nos				180 nos	41.61	10.85	
	g Installation of VSST/SST	1200 nos	57.95	23 04	80.99	0.004	360 nos				360 nos	17.39	6.91	
	h. Construction of IRP	950 nos	57.00	16 75	73.75	0.003	245 nos				245 nos	14.70	4.32	
	i. Rain Water hurvesting System	110 nos	132.00	225.50	357.50	0,016	30 nos				30 nos	36.00	61.50	
	j Inst of infiltration Gallery	100 nos		10.46	10.46	0.000	30 nos				30 nos		3.14	
	k. Installation of Gravity Fed System	25 nos		5.20	5.23	0 000	10 nos				5 nos		1.05	
	l. Inst of Water source cons. of latrine and smokeless chula at UP health centre	600 nos		215.00	215.00	0 010	200 nos				200 nos		71.66	
	m Const of smokeless chula & latrine at EPI out-reach centre	10000 nos		350.00	350.00	0.016					3000 nos		105.00	105.00
	n Construction of latrine and Water source at primary school and madrashas	10,350 nos		3622.50	3622.50	0.167					3000 nos		1050.00	1050 00

Sl No	Item of Works	Total Physical	Total Estimated Cost			Weigh-tage	Physical	Proposed 1996-97			Proposed 1997-98			
								Financial			Physical	Financial		
			GOB	PA	Total			GOB	PA	Total		GOB	PA	Total
3	Transport a. Car b. Jeep c. Speed Boad	7 nos 3 nos	126 00 16.50		126 00 16 50	0.006 0 001				7 nos 3 nos	126 00 16.50		126 00 16 50	
4	Machinery & Equipment	LS	42.25		42.25		20 00		20.00	LS	22.25		22.25	
5	Consultancy	LS		984 00	984 00					LS		490 00	490 00	
6	Other Investment Cost	LS	1100 00	4221 00	5321 00		21.05		21 05	LS	378.95	1407.00	1785 95 5982 20	
	Total		6886 84	12810.15	19696.99		210 00	64.54	274 54		2052.73	4029 47	6082.20	
	CD+VAT (Unicef Local Purchase)		1500 00		1500.00	0.069					500 00		500.00	
	Cost Escalation		55 00		550.00	0.025					50.00		50.00	
	Grand Total		8936.84	12810.15	21746.99	0.982	210.00	64.54	274.54		2602.73	4029.47	6632.20	

Sl No	Item of Works	Total Physical	Total Estimated Cost			Weigh-tage	Physical	Proposed 1998-99			Physical	Proposed 1999-2000		
			GOB	PA	Total			Financial				Financial		
								GOB	PA	Total		GOB	PA	Total
1	Manpower	143 nos	397.36		397.36	0.018	143 nos	110.00		110.00	143 nos	127.36		127.26
2	Physical Construction													
	a Sinking of Shallow T/W	800 nos	14.11	20.66	34.77	0.002	200 nos	3.53	5.17	8.70	400 nos	7.05	10.32	17.37
	b Sinking of Deep T/W	6000 nos	1620.00	533.82	2153.82	0.099	1700 nos	459.00	151.25	610.25	2400 nos	648.00	213.52	861.52
	c. Sinking of Tara T/W	50800 nos	2791.46	2374.39	5165.85	0.238	13200 nos	725.35	616.97	1342.31	23400 nos	1285.83	1093.71	2379.64
	d. Sinking of Tara-II T/W	2400 nos	131.88	136.78	268.66	0.012	600 nos	32.97	34.19	67.16	1200 nos	65.94	68.40	134.34
	e. Construction of Ringwell	500 nos	261.62	34.86	296.48	0.014	150 nos	78.49	10.46	88.95	200 nos	104.64	13.94	118.58
	f Construction of PSF	600 nos	138.71	36.16	174.87	0.008	180 nos	41.61	10.85	52.46	240 nos	55.49	14.46	69.95
	g. Installation of VSST/SST	1200 nos	57.95	23.04	80.99	0.004	360 nos	17.39	6.91	24.30	480 nos	23.17	9.22	32.39
	h. Construction of IRP	950 nos	57.00	16.75	73.75	0.003	245 nos	14.70	4.32	19.02	460 nos	27.60	8.11	35.71
	i. Rain Water harvesting System	110 nos	132.00	225.50	357.50	0.016	30 nos	36.00	61.50	97.50	50 nos	60.00	102.50	162.50
	j. Inst of infiltration Gallery	100 nos		10.46	10.46	0.000	30 nos		3.14	3.14	40 nos		4.18	4.18
	k. Installation of Gravity Fed System	25 nos		5.20	5.23	0.000	10 nos		2.09	2.09	10 nos		2.09	2.09
	l. Inst of Water source, cons of latrine and smokeless chula at UP health centre	600 nos		215.00	215.00	0.010	200 nos		71.66	71.66	200 nos		71.68	
	m Const of smokeless chula & latrine at EPI out-reach centre	10000 nos		350.00	350.00	0.016	3000 nos		105.00	105.00	4000 nos		140.00	140.00
	n. Construction of latrine and Water source at primary school and madrasahs	10,350 nos		3622.50	3622.50	0.167	3000 nos		1050.00	1050.00	4000 nos		1522.50	1522.50

Sl No	Item of Works	Total Physical	Total Estimated Cost			Weightage	Proposed 1998-99					Proposed 1999-200			
			GOB	PA	Total		Physical	Financial			Physical	Financial			
								GOB	PA	Total		GOB	PA	Total	
3	Transport a. Car b. Jeep c. Speed Boad	7 nos 3 nos	126 00 16 50		126 00 16 50	0 006 0 001									
4	Machinery & Equipment	LS	42 25		42 25	0 002									
5	Consultancy	LS		984.00	984.00	0 045	LS		244.00	244.00	LS		250 00	250 00	
6	Other Investment Cost	LS	1100 00	4221 00	5321 00	0 245	LS	350 00	1407.00	1757 00	LS	350 00	1407.00	1757.00	
	Total		6886.84	12810.15	19696 99			1869.03	3784.51	5653 54		2755.08	4931 63	7686 71	
	CD+VAT (Unicef Local Purchase)		1500.00		1500.00	0 069		500.00		500.00		500 00		500.00	
	Cost Escalation		55 00		550.00	0.025		100 00		100.00		400.00		400 00	
	Grand Total		8936.84	12810.15	21746.99	1.000		2469.03	3784.51	6253.54		3655.08	4931.63	8586.71	

Annex - B

Summary of Annual Allocations

Sl. No.	Name of Item	1996 - 97	1997 - 98	1998 - 99	1999 - 2000	Total
1	Shallow Tube-wells	-	200	200	400	800
2.	Deep Tube-wells	200	1700	1700	2400	6000
3.	Tara Tube-wells	1000	13200	13200	23400	50800
4	Tara -2 Tube-wells	-	600	600	1200	2400
5.	Ring well	-	150	150	200	500
6	V.S S T.	-	300	300	400	1000
7.	S.S.T	-	60	60	80	200
8.	P.S.F.	-	180	180	240	600
9.	I.R.P.	-	245	245	460	950
10	Storage of rain water & reservoir	-	30	30	50	110
11.	Infiltration Gallery	-	30	30	40	100
12	Gravity Feed System	-	5	5	10	25
13.	Water Source, latrine and smokeless chulas in UP Health Centres	-	200	200	200	600
14	Exhibitory latrine and smokeless chulla in EPI centres	-	3000	3000	4000	10000
15.	Source of water and sanitary latrine in Primary Schools and Madrashes	-	3000	3000	4350	10350

Annex - C

**Area Based Annual distribution of different physical programs
according to technology**

Low water level area

Sl. No.	Name of Item	1996 - 97	1997 - 98	1998 - 99	1999 - 2000	Total
1.	Tara Tube well (Pump)	1000	13000	13000	23000	50000
2.	Tara-2 Tube well	-	500	500	1000	2000
3	I R.P	-	200	200	400	800
4.	Water source, latrine and smokeless chulla in UP health centres	-	140	130	130	400
5	Exhibitory latrine and smokeless chulla in EPI centres	-	2200	2200	2750	7150
6	Water Source and sanitary latrines in primary schools and Madrashes	-	2100	2100	2800	7000

Coastal Area

SI No.	Name of Item	1996 - 97	1997 - 98	1998 - 99	1999 - 2000	Total
1.	Deep Tube well	200	1700	1700	2400	6000
2.	V.S S T.	-	300	300	400	1000
3.	S.S.T.	-	60	60	80	200
4.	P.S.T.	-	180	180	240	600
5	Rain water storage & reservoir	-	15	15	30	60
6	Source of water, latrine and smokeless chulla in UP Health Centres	-	50	50	55	160
7	Exhibitory latrine and smokeless chulla in E.P.I. Centres	-	700	700	950	2350
8.	Source of water and latrines in primary School and Madrashes.	-	700	700	1200	2600

Annex - C (Page-2)

Chittagong Hill Tract (CHT) Area

SI No	Name of Item/org	1996 - 97	1997 - 98	1998 - 99	1999 - 2000	Total
1	Shallow tube well	-	200	200	400	800
2.	Tara Tube well	-	200	200	400	800
3.	Tara-2, Tube well	-	100	100	200	400
4.	Ring well	-	150	150	200	500
5	Storage of rain water and reservoir	-	15	15	20	50
6.	Infiltration gallery	-	30	30	40	100
7.	Gravity feed system	-	5	10	10	25
8.	I R.P.	-	45	45	60	150
9	Source of water, Latrine and smokeless chulla in UP health centre.	-	10	15	15	40
10.	Exhibition Latrine and smokeless chulla in EPI centres	-	100	100	300	500
11.	Source of water and sanitary latrines in primary schools and Madrashes.	-	200	200	350	750

Annex-D

Sl.No	District	Name of Thana	No of Unions
1.	Dhaka	Keraniganj, Dhamrai, Savar, Tejgaon	32
2.	Gazipur	Kaliganj, Sreepur, Kaliakoir, Kapashia, Gazipur Sadar.	47
3.	Manikganj	Manikganj Sadar, Shibalaya.	16
4.	Tangail	Ghatail, Shokhipur, Mirzapur, Kalihati, Modhupur, Bashail.	32
5.	Jamalpur	Jamalpur Sadar.	12
6.	Sherpur	Sherpur Sadar, Nakhla, Nalitabari, Jhinaigati.	33
7.	Mymensingh	Mymensing Sadar, Muktagacha, Fulpur, Trishal, Valuka, Gaffargaon, Fulbari, Gouripur, Nandail, Haluaghat, Dhobaura, Ishwarganj.	146
8.	Narsingdi	Palash, Monohardi, Shibpur, Belabo.	21
9.	Narayanganj	Narayanganj Sadar, Sonargaon, Rugganj	15
10.	Kishoreganj	Kishoreganj Sadar, Kotiadi, Hossainpur, Tarail, Karimganj, Bazutpur, Pakundia	60
11.	Netrokona	Barhatta, Netrokona Sadar, Atpara, Purba Dhala, Durgapur.	38
12.	Chittagong	Rauzan, Banskhali, Satkania, Lohagara, Boalkhali.	20
13.	Cox's Bazar	Teknaf, Ramu, Cox's Bazar Sadar, Chakoria, Ukhia	16
14.	Habiganj	Nabiganj, Madhabupr.	6
15.	Moulavi Bazar	Rajnagar, Moulavi Bazar Sadar, Sreemangal, Kulaura.	29
16.	Brahmanbaria	Kasba, Brahmanbaria Sadar.	7
17.	Comilla	Comilla Sadar, Choudhagram, Chandina, Burechang	37
18.	Sylhet	Sylhet Sadar, Biyani Bazar, Juintapur, Fenchuganj, Gopalganj.	28
19.	Rajshahi	Mohonpur, Durgapur, Charchat, Bagha, Putra, Godagan, Paba, Baghmara, Tanore.	70
20.	Pabna	Shuzanagar, Chatmohar, Pabna Sadar, Sathia, Faridpur, Bera, Bhangura, Iswardi, Atgharia.	64
21.	Chapai-nawabganj	Chapainababganj Sadar, Shibganj, Bholahat, Gomastapur, Nachol.	31
22.	Sirajgunj	Serajgunj Sadar, Ullapara, Raiganj, Tarash.	42
23.	Natore	Natore Sadar, Lalpur, Bagtipara, Gurudashpur, Baraigram, Singra.	44
24.	Naogaon	Naogaon Sadar, Dhamurhat, Badalgachi, Patnitala, Rani Nagar, Mohadepur, Niamatpur, Shapahar, Manda, Atrai, Porsha.	91
25.	Jessore	Jessor Sadar, Bagharpara, Jhikargacha, Sharsha, Chowgacha	24
26.	Jhenidah	Jhinedah, Shaikupa, Harinkunda, Kaliganj,	30
27.	Magura	Magura Sadar, Sreepur, Mohammadpur	20
28.	Satkhira	Satkhira Sadar, Kolaroa.	17
29.	Kushtia	Kumarkhali, Khoksha, Mirpur, Bhera Mara, Daulatpur.	39
30.	Meherpur	Meherpur Sadar, Gangni	9
31.	Chuadanga	Chuadanga Sadar, Damurhuda.	14
32.	Khulna	Dighalia.	1
33.	Faridpur	Modhukhali	9
34.	Rajbari	Baliakandi, Pangsha	22
35.	Gaibandha	Gaibandha Sadar, Sodullapur, Polashkathi	30
36.	Joypurhat		
37.	Bogra		
38.	Rangpur	Mithapukur, Pirganj, Badarganj.	
39.	Dinajpur	Dinajpur Sadar, Kaharul, Fulbari, Chirirbandar Ghoraghat, Beerampur, Parbatipur, Biral, Birganj.	

Annex-D (Page-2)

Coastal Area

Sl. No.	Name of District	Name of Thanas	No. of Unions
1.	Chittagong	Sitakundu, Sandip, Satkkania, Chandanaish, Lohagara, Anwara, Patya, Boalkhali, Mirersharai.	88
2.	Cox's Bazar	Chokoria, Kutubdia, Maheshkhali, Raamu, Cox's Bazar Sadar.	31
3.	Satkhira	Debhata, Kaliganj, Ashashuni, Shaym Nagor	
4.	Bagerhat	Marelgonj, Bagerhat Sadar, Smarankhala, Mongla.	31
5.	Khulna	Fultala, Batiaghata, Dumuria, Digholia, Dakop, Paikgacha, Koira.	48
6.	Bhola	Bhola Sadar, Borhanuddin, Daulat Khan, Lalmohon, Charfashion, Tojumuddin, Monpura.	59
7.	Barisal	Barishal Sadar, Uzirpur, Babuganj, Bakergonj, Gournadi, Ajailjhara, Muladi, Mehendigonj, Hizlam Banaripara.	85
8.	Pirojpur	Bhandaria, Nazirpur, Pirojpur Sadar, Sharupkathi, Kaukhali, Mothbaria.	44
9.	Jhalakathi	Rajapur, Kathalia, Jhalkathi Sadar, Nalchiti.	32
10.	Shariatpur	Shariatpur Sadar, Goshairhat, Bhederganj, Naria, Damudya,	41
11.	Gopalganj	Kotalipara	12
12.	Madaripur	Madaripur Sadar, Kalkini.	18

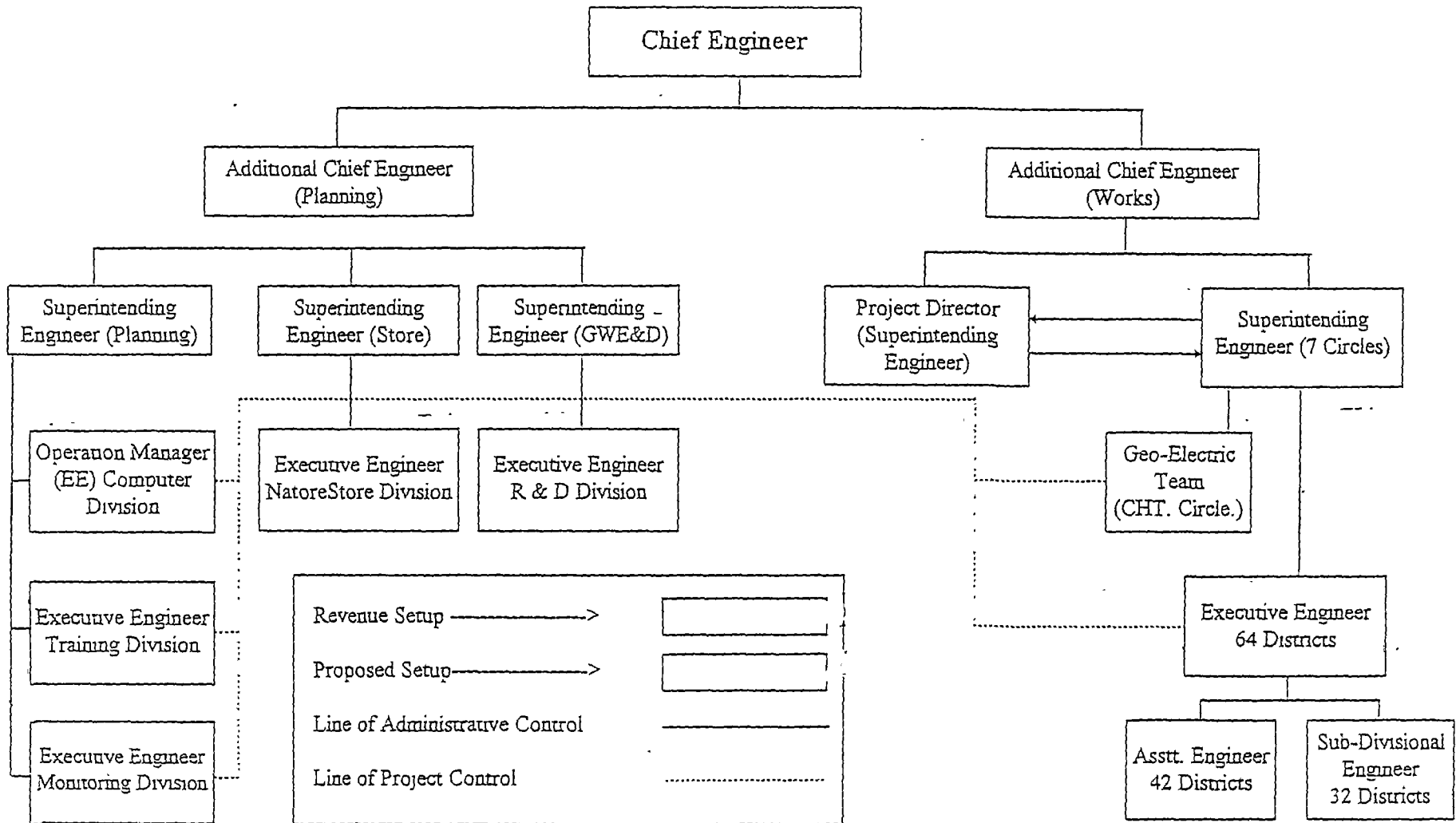
CHITTAGONG HILL TRACTS

Sl. No.	Name of District	Name of Thanas	No. of Unions
1	Khagrachari	Mohalchari, Khagrachori Sadar, Dighinala, Ramgar, Matiranga, Manikchori, Panchori, Laxmichori.	34
2.	Bandarban	Ali Kadem, Laikhangchori, Lama, Thanchi, Banderbun Sadar, Ruma, Rowangchori	29
3.	Rangamati	Baghaichori, Longdu, Barkal, Belaichori, Rangamati Sadar, Kaptai, Juraichori, Rajasthali, Kaukhali, Naniarchar.	

Note: The following districts are marked as shallow water table area following the water goes down below 8 meters in the noted period, the districts will be treated as low water layer area

- | | | | |
|---------------|---------------|-----------------|---------------|
| 1. Chandpur | 2. Sunamganj, | 3. Nilphamari, | 4. Thakurgaon |
| 5. Panchagar, | 6. Kurigram, | 7. Lalmonirhat, | 8. Narail. |

PROJECT MANAGEMENT STRUCTURE



Annex-E.2

Distribution of Manpower for the office of the Project Director

Sl No.	Name of the Post	No of Posts	Pay Scale	Annual Expenditure (in lakh taka)
1	Project Director (Superintending Eng. Status)	1	7100 — 8700	1.69
2.	Assistant Chief Engineer	1	6300 — 8050	1.54
3.	Executive Engineer	1	6300 — 8050	1.54
4.	Sub-divisional/Assistant Engineer *	4	4800 — 7250 2850 — 5155	4.88
5	Women Development Officer	1	2850 — 5155	0.84
6	Assistant Programmer/Assistant Engineer	1	2850 — 5155	0.84
7	Estimator/Sub-Assistant Engineer	2	2300 — 4480	1.40
8	Assistant Women Development Officer	2	1300 — 4480	1.40
9.	Computer Operator	2	1725 — 3725 1475 — 3150	1.10
10.	Head/Upper Division Assistant	1	1475 — 3150	0.49
11	Stenographer	2	1475 — 3150	0.96
12	Accountant	1	1375 — 2870	0.45
13.	Accounts Assistant	1	1200 — 2335	0.38
14	Lower Division Assistant-Cum-Typist.	3	1200 — 2335	1.14
15.	(Car) Driver	3	1200 — 2335	1.14
16.	M L S.S	4	900 — 1530	1.08
	Total	30		20.87

* One Sub-divisional Assistant Engineer will be appointed for each coastal low water table and Hill Tracts areas and one will be appointed as a staff officer of project director

Annex - E.3

Post of Assistant Engineer in 42 New Districts

Sl No	Name of the Post	No of Posts	Pay Scale	Annual Expenditure (in lakh taka)
1	Assistant Engineer	42	2850 — 5155	35.28

At present out of 68 districts the post of AE in 22 districts are already exists in 22 districts In the remaining 42 districts there is no post of Assistant Engineer which is essential 42 Assistant Engineers, one for each district, have been included in the project. Assistant Engineers will remain engaged in such activities as training, Health Education Programme, School Sanitation programme, Social mobilization programme and monitoring and co-ordination with WATSAN committee.

Annex - E.4

Manpower Distribution of the office of Executive Engineer, Training Division

Sl No.	Name of the Post	No of Posts	Pay Scale	Annual Expenditure (in lakh taka)
1.	Executive Engineer	1	6300 — 8050	1.54
2.	Sub-Divisional/Asstt. Engineer	2	4800 — 7250 2850 — 5155	2.44
3.	Sub-Asstt. Engineer/Estimator	1	2300 — 4480	0.70
4.	Computer Operator	1	1725 — 3725 1475 — 3150	0.55
5.	Low Division Asstt. Cum Typist	1	1200 — 2335	0.38
6.	M.H S.S.	1	900 — 1530	0.27
	Total	7		5.88

This division was under UNCEF aided Rural Water Supply Project in the costal areas and had been working for last two years. After completion of the project in June, 1996, the division is brought under new UNICEF aided project.

Annex - E.5

**Distribution of Manpower in the Office of the Executive Engineer,
Stores Division, Natore**

Sl No	Name of the Post	No of Posts	Pay Scale	Annual Expenditure (in lakh taka)
1	Executive Engineer	1	6300 — 8050	1.54
2	Sub-Divisional/Assistant Engineer	1	4800 — 7250 2850 — 5155	1.22
3.	Sub-Asstt. Engineer/Estimator	4	2300 — 5580	2.80
4.	Divisional Accountant	1	1725 — 3725	0.55
5.	Head/Upper Division Assistant	1	1475 — 3150	0.49
6.	Store Keeper	1	1375 — 2870	0.45
7	Mechanic	3	1300 — 2615	1.26
8.	Accounts Assistant	2	1200 — 2335	0.76
9	Lower Division Assistant Cum Typist	2	1200 — 2335	0.76
10.	Typist	2	1200 — 2335	0.76
11.	Cashier	1	1200 — 2335	0.38
12	Cash peon	1	1125 — 2170	0.35
13.	Driver	2	1200 — 2335	0.76
	Total	22		12.08

This Division was under UNICEF aided Rural Water Supply Project in the Low Water Table areas and had been working there for Eight (8) years. After the completion of the project in June, 1996 This Division has been placed under new UNICEF aided project

Annex - E.6

**Distribution of Manpower in the Office of Operation Manager (Executive Engineer)
Computer Division**

SI No.	Name of the Post	No of Posts	Pay Scale	Annual Expenditure (in lakh taka)
1.	Operation Manager (Executive Engineer)	1	3600 — 8050	1.54
2	Assistant System Analyst	1	3200 — 5440 2850 — 5155	0.91
3.	Programmer	1	3200 — 5440 2850 — 5155	1.91
4.	Senior Data Entry Operator	1	1725 — 3725	0.55
	Data Entry Operator		1375 — 2870	
	Total	4		4.91

This Division was under UNICEF aided rural water supply project in shallow water level areas and worked there for last seven years. The project being completed in June, 1997, This Division of placed under new UNICEF aided project

Annex - E.7

**Distribution of Manpower in the Office of the Executive Engineer,
Monitoring Division**

Sl No.	Name of the Post	No of Posts	Pay Scale	Annual Expenditure (in lakh taka)
1.	Executive Engineer	1	6300 — 8050	1.54
2.	Assistant Engineer	1	2850 — 5155	0.84
3.	Sub-Assistant Engineer/ Estimator	1	2300 — 4480	0.70
4.	Lower Division Assistant Cum Typist	1	1200 — 2335	0.38
5.	M.L.S.S.	1	900 — 1530	0.27
	Total	5		3.73

This Division was under UNICEF aided Tube well rehabilitation project and worked there for last three years. The project being completed in June, 1996, the division is under UNICEF aided new project

Annex - E.8

**Distribution of Manpower in the Office of the Executive Engineer,
R & D Division**

Sl No.	Name of the Post	No of Posts	Pay Scale	Annual Expenditure (in lakh taka)
1.	Executive Engineer	1	6300 — 8050	1.54
2	Sub-Division/ Asstt. Engineer	1	4800 — 7250 2850 — 5155	1.22
3.	Junior Hydrologist	2	2850 — 5155	1.68
4.	Technical Supervisor	2	2300 — 4480	1.40
5.	Draft men	1	2300 — 4480	0.70
6.	Tracer	1	1200 — 2335	0.38
7.	Divisional Accountant	1	1725 — 3725	0.55
8	Head/Upper Division Assistant	1	1475 — 3150	0.49
9	Lower Division Asstt. Com Typist	1	1200 — 2335	0.38
10.	Technician	2	1300 — 2615	0.84
11.	Accounts Assistant	1	1200 — 2335	0.38
12.	Cashier	1	1200 — 2335	0.38
13.	Driver	3	1200 — 2335	1.14
14.	M.L.S.S.	4	900 — 1530	1.08
	Total	22		12.16

Junior Hydrologists will work with the drilling team in Chittagong Hill Tract region during drilling work is on. If necessary they will work in Dhaka Headquarter.

Annex-E.9

Manpower of Geo-Electrical Team

Sl No.	Name of the Post	No of Posts	Pay Scale	Annual Expenditure (in lakh taka)
1.	Master Driller (Sub-Asstt. Engineer, Mechanical)	2	2300 — 4480	1.40
2.	Asstt. Driller/Foremen	4	1725 — 3725	2.20
3.	Mechanic (Automobile)	2	1300 — 2615	0.84
4.	Driver	1	1200 — 2335	0.38
5.	Helper (Skilled labourer)	1	1050 — 1915	0.32
6.	Chowkider	1	900 — 1530	0.27
	Total	11		5.41

These above mentioned manpower will be divided into two groups and work in Chittagong Hill District for drilling. Drilling works has to be done continuously without any interval. It is not possible for only one team to work for so long a period. So two groups are required to work 8 hours by turn. Each team will consist of 1 Master Driller, 2 Asstt. Driller and 1 Mechanic.

ITEM-WISE BREAK-UP OF DEFERENT ESTABLISHMENTS

Sl. No	Name of the Establishment	Average depth (metre)	UNICEF Contribution: Materials (taka)	GOB Contribution (taka)	Beneficiary contribution	Total Cost for Installation
1.	Sinking of Shallow Tube well	36.5	2,583	-	1,763	4,346
2.	Sinking of Deep Tube well	260	7,797	-	27,000	35,897
3.	Sinking of Tara Tue well	45	4,674	-	5,495	10,169
4.	Sinking of Tara-2 Tube well	45	5,699	-	5,495	11,194
5.	Digging Ring wells	15	6,970	20,725	31,600	59,295
6.	V.S.S.T. installation	8	1,886	-	4,520	6,406
7.	S.S.T	15	2,091	-	6,375	8,466
8.	P S.F	-	6,027	14,518	8,600	29,145
9.	Construction of I.R.P.	-	1,763	-	6,000	7,763
10.	Construction rain water storage and reservoir	-	2,050	40,000	8,000	3,250
11.	Construction Infiltration gallery	-	2,091	-	8,364	10,455
12.	Construction Gravity feed system	-	8,364	-	12,546	20,910
13.	Construction smokeless chulla & latrines for exhibition/ demonstration	-	-	-	-	3,500

Annex- G

Proposed Steering Committee for Coordination of GOB-UNICEF Project on Hygiene, Sanitation and Water Supply in Rural Areas

1.0 Steering Committee:

1	Secretary, Local Govt Division	Chairman
2	Chief Engineer, DPHE	Member
3.	One Representative of Economic Division of the Ministry of Finance (not below the rank of Joint Secretary)	Member
4.	One Representative (not below Joint Chief) of Planning Commission	Member
5	One Representative (not below Joint Chief) of IMED	Member
6.	One Representative (not below Jt. Secretary) of Economic Relations Division (ERD)	Member
7	Project Director, Hygiene, Sanitation/Health Development and Water Supply in Rural Areas	Member-Secretar

2.0 Terms of Reference of the Proposed Committee:

- ☞ This Committee will review the implementation & progress of the Project and take action through Inter-Ministerial Co-ordination
- ☞ This Committee will issue (Policy Guidance)
- ☞ This Committee will hold meetings as and when necessary. But at least once in a quarter

3.0 Representatives of Aid/Funding agencies will attend on special invitation.

DISTRICTWISE RURAL POPULATION

Sl. No.	Name of the District	Population in '000 as on 1991			Population in the rural area in '000								
		Total	Urban	Rural	1992	1993	1994	1995	1996	1997	1998	1999	2000
1	Dhaka	5840	3690	2150	2171	2193	2214	2235	2256	2276	2297	2317	2337
2	Narayanganj	1755	277	1478	1506	1535	1564	1593	1624	1654	1686	1718	1750
3	Narsingdi	1652	98	1554	1585	1616	1648	1680	1713	1747	1782	1817	1853
4	Munshiganj	1188	42	1146	1169	1192	1216	1240	1265	1290	1315	1341	1368
5	Manikganj	1176	45	1131	1153	1176	1200	1224	1248	1273	1298	1324	1350
6	Gazipur	1622	265	1357	1383	1409	1436	1463	1490	1519	1547	1577	1606
7	Tangail	3002	152	2850	2906	2964	3023	3082	3143	3205	3269	3333	3399
8	Jamalpur	1874	152	1722	1756	1790	1825	1861	1897	1934	1972	2011	2050
9	Sherpur	1139	63	1076	1097	1119	1141	1164	1187	1210	1234	1258	1283
10	Mymensingh	3957	228	3729	3803	3878	3954	4032	4112	4193	4276	4360	446
11	Netrokana	1731	60	1671	1704	1738	1773	1808	1844	1881	1918	1956	1995
12	Kishoreganj	2306	153	2153	2195	2239	2283	2328	2373	2420	1468	2516	2566
13	Chittagong	5296	1431	3865	3934	4005	4076	4149	4223	4298	4375	4453	4532
14	Cox's Bazar	1419	47	1372	1399	1427	1456	1484	1514	1544	1575	1606	1638
15	Comilla	4033	183	3850	3926	4004	4083	4164	4247	4331	4417	4504	4594
16	Brahmanbaria	2142	109	2033	2073	2114	2156	2199	2242	2287	2332	2378	2425
17	Chandpur	2032	107	1925	1963	2002	2041	2082	2123	2165	2208	2251	2296
18	Noakhali	2217	133	2084	2125	2167	2210	2253	2298	2343	2389	2436	2484
19	Laxmipur	1312	80	1232	1256	1281	1306	1332	1358	1385	1412	1440	1469
20	Feni	1097	27	1070	1091	1113	1135	1158	1181	1205	1229	1253	1278
21	Sylhet	2153	95	2058	2099	2140	2183	2226	2270	2315	2361	2408	2456
22	Moulavi Bazar	1377	50	1327	1353	1380	1408	1436	1464	1493	1523	1553	1584
23	Habiganj	1527	36	1491	1521	1551	1582	1614	1646	1679	1712	1746	1781
24	Sunamganj	1709	26	1683	1717	1751	1786	1822	1858	1895	1933	1972	2011
25	Rangpur	2160	246	1914	1951	1989	2027	2066	2106	2147	2188	2231	2274
26	Kurigram	1603	58	1545	1576	1607	1639	1672	1705	1739	1773	1808	1844
27	Lalmonirhat	953	47	906	924	942	961	980	999	1019	1039	1060	1081
28	Gaibandha	1949	40	1909	1947	1986	2026	2066	2107	2150	2192	2236	2281

29	Nilphamari	1349	129	1220	1244	1268	1293	1318	1343	1370	1396	1423	1451
30	Dinajpur	2260	175	2085	2126	2168	2210	2253	2297	2342	2388	2435	2483
31	Thakurgaon	1011	52	959	978	997	1017	1037	1058	1079	1100	1122	1144
32	Panchagar	712	31	681	695	708	722	737	751	766	781	797	813
33	Bogra	2669	163	2506	2555	2606	2657	2710	2763	2817	2873	2929	2987
34	Joypurhat	765	41	724	738	753	768	783	798	814	830	847	863
35	Khulna	2011	663	1348	1371	1395	1419	1443	1468	1493	1518	1544	1570
36	Bagerhat	1431	97	1334	1360	1387	1414	1442	1470	1499	1529	1559	1589
37	Satkhira	1597	92	1505	1535	1565	1596	1627	1659	1692	1726	1760	1794
38	Jessore	2107	140	1967	2006	2045	2085	2126	2168	2211	2254	2299	2344
39	Jhenaidaha	1361	155	1206	1229	1253	1277	1302	1327	1353	1379	1406	1433
40	Megura	724	37	687	701	714	729	743	758	773	788	804	819
41	Narail	656	41	615	627	639	652	665	678	691	705	719	733
42	Kushtia	1502	102	1400	1428	1456	1484	1513	1543	1574	1604	1636	1668
43	Chuadanga	807	107	700	731	727	741	755	770	785	800	815	830
44	Meherpur	492	27	465	474	484	493	503	513	523	533	544	554
45	Banshal	2207	188	2019	2058	2099	2140	2182	2224	2268	2312	2357	2403
46	Jhalakathi	666	63	603	615	627	639	651	664	677	690	704	717
47	Perojpur	1063	33	1030	1051	1071	1093	1115	1137	1159	1182	1206	1230
48	Bhola	1476	34	1442	1471	1500	1530	1561	1592	1624	1656	1689	1723
49	Fardpur	1506	69	1437	1465	1495	1524	1554	1585	1617	1649	1681	1714
50	Rajbar	835	65	770	785	800	816	832	848	865	882	899	917
51	Gopalganj	1061	25	1036	1057	1078	1099	1121	1144	1166	1190	1213	1238
52	Madanpur	1069	46	1023	1043	1064	1085	1107	1129	1151	1174	1197	1221
53	Shariatpur	953	33	920	938	957	876	995	1015	1035	1056	1077	1098
54	Patuakhali	1274	45	1229	1253	1278	1304	1330	1356	1383	1411	1439	1467
55	Borguna	776	22	754	769	784	800	816	832	849	866	883	900
56	Rajshahi	1887	294	1593	1623	1654	1686	1718	1750	1783	1817	1852	1887
57	Natore	1388	85	1303	1329	1355	1382	1409	1437	1465	1494	1523	1553
58	Nawabganj	1171	160	1011	1030	1050	1070	1091	1112	1133	1155	1177	1199
59	Naoagan	2148	101	2047	2088	2129	2171	2214	2258	2303	2348	2395	2442

60	Pabna	1920	194	1726	1760	1794	1829	1864	1900	1937	1975	2013	2052
61	Sirajganj	2264	159	2105	2146	2189	2232	2275	2320	2366	2412	2459	2508
62	Rangamati	401	48	353	360	367	374	381	388	396	403	411	419
63	Bandarban	231	22	209	213	217	221	226	230	235	239	244	249
64	Khagrachari	343	23	320	326	333	339	346	353	360	367	374	381
	Bangladesh	106,314	11,701	94,613	96,446	98,313	100,217	102,157	104,133	106,148	108,201	110,293	112,425

Av Country Population Growth Rate = 2.01%

Av Urban Population Growth Rate = 2.6%

Source . Population Census, 1991: BBS

Technologywise Population Distribution as of 2000

Sl. No.	Name of the District	Area Distribution in % (2000), in terms of Applicability of Tube Well Technology				Population Distribution in '000 (2000), in terms of Applicability of Tube Well Technology			
		Shallow water Table area	Deep Aquifer	Low Water Table area	Problem Area	Shallow water Table area	Deep Aquifer	Low Water Table area	Problem Area
1	2	3	4	5	6	7	8	9	10
1	Dhaka	25.00	0.00	75.00	0.00	584.14	0.00	1,752.43	0.00
2	Narayanganj	75.00	0.00	25.00	0.00	1,312.69	0.00	437.56	0.00
3	Narsingdi	87.00	0.00	13.00	0.00	1,611.73	0.00	240.83	0.00
4	Munshiganj	60.00	0.00	40.00	0.00	820.87	0.00	547.24	0.00
5	Manikganj	40.00	0.00	60.00	0.00	539.99	0.00	809.99	0.00
6	Gazipur	0.00	0.00	100.00	0.00	0.00	0.00	1,606.29	0.00
7	Tangail	30.00	0.00	70.00	0.00	1,019.80	0.00	2,379.53	0.00
8	Jamalpur	30.00	0.00	70.00	0.00	610.02	0.00	1,435.06	0.00
9	Sherpur	45.00	0.00	47.00	8.00	577.37	0.00	603.03	102.64
10	Mymensingh	20.00	0.00	80.00	0.00	889.18	0.00	3,556.72	0.00
11	Netrokana	65.00	0.00	35.00	0.00	1,296.71	0.00	698.23	0.00
12	Kishoreganj	82.00	0.00	18.00	0.00	2,103.76	0.00	461.80	0.00
13	Chittagong	71.00	26.00	3.00	0.00	3,217.66	1,178.30	135.96	0.00
14	Cox's Bazar	71.00	26.00	3.00	0.00	1,136.06	425.91	49.14	0.00
15	Comilla	65.00	0.00	35.00	0.00	2,985.78	0.00	1,607.73	0.00
16	Brahmanbaria	95.00	0.00	5.00	0.00	2,303.58	0.00	121.24	0.00
17	Chandpur	83.00	0.00	17.00	0.00	1,905.49	0.00	390.28	0.00
18	Noakhali	53.00	45.00	0.00	1.50	1,329.10	1,117.93	0.00	37.26
19	Laxmipur	88.00	10.00	0.00	2.00	1,292.33	146.86	0.00	29.37
20	Feni	85.00	15.00	0.00	0.00	1,086.43	191.72	0.00	0.00
21	Sylhet	92.00	0.00	3.00	8.00	2,259.17	0.00	73.67	122.78
22	Moulavi Bazar	93.00	0.00	3.00	4.00	1,473.21	0.00	47.52	63.36
23	Habiganj	96.00	0.00	4.00	0.00	1,709.92	0.00	71.25	0.00
24	Sunamganj	30.00	50.00	0.00	0.00	1,005.73	1,005.73	0.00	0.00
25	Rangpur	77.00	0.00	23.00	0.00	1,750.79	0.00	522.96	0.00

26	Kurigram	85.00	0.00	15.00	0.00	1,567.70	0.00	276.65	0.00
27	Lalmonirhat	100.00	0.00	0.00	0.00	1,080.71	0.00	0.00	0.00
28	Gaibandha	77.00	0.00	23.00	0.00	1,756.29	0.00	524.61	0.00
29	Nilphamari	100.00	0.00	0.00	0.00	1,451.08	0.00	0.00	0.00
30	Dinajpur	65.00	0.00	35.00	0.00	1,613.83	0.00	868.99	0.00
31	Thakurgaon	92.00	0.00	8.00	0.00	1,052.29	0.00	91.50	0.00
32	Panchagar	100.00	0.00	0.00	0.00	812.60	0.00	0.00	0.00
33	Bogra	35.00	0.00	65.00	0.00	1,045.51	0.00	1,941.65	0.00
34	Joypurhat	0.00	0.00	100.00	0.00	0.00	0.00	863.40	0.00
35	Khulna	56.00	31.00	0.00	13.00	879.29	486.75	0.00	204.12
36	Bagerhat	56.00	18.00	0.00	26.00	890.11	286.11	0.00	413.26
37	Satkhira	61.00	10.00	3.00	26.00	1,094.55	179.43	53.83	566.53
38	Jessore	45.00	2.00	53.00	0.00	1,054.76	46.88	1,242.27	0.00
39	Jhenaidaha	20.00	0.00	80.00	0.00	286.54	0.00	1,146.14	0.00
40	Megura	55.00	0.00	45.00	0.00	450.67	0.00	368.73	0.00
41	Narail	100.00	0.00	0.00	0.00	733.02	0.00	0.00	0.00
42	Kushtia	50.00	0.00	50.00	0.00	834.05	0.00	834.05	0.00
43	Chuadanga	65.00	0.00	35.00	0.00	539.82	0.00	290.67	0.00
44	Meherpur	95.00	0.00	5.00	0.00	526.76	0.00	27.72	0.00
45	Barishal	75.00	25.00	0.00	0.00	1,802.28	600.76	0.00	0.00
46	Jhalakathi	60.00	29.00	0.00	1.00	430.36	279.73	0.00	7.17
47	Perojpur	60.00	28.00	0.00	12.00	737.96	344.38	0.00	147.59
48	Bhola	0.00	100.00	0.00	0.00	0.00	1,722.68	0.00	0.00
49	Faridpur	75.00	0.00	25.00	0.00	1,285.85	0.00	428.62	0.00
50	Rajbari	30.00	0.00	70.00	0.00	275.07	0.00	641.82	0.00
51	Gopalganj	90.00	10.00	0.00	0.00	1,113.85	23.76	0.00	0.00
52	Madaripur	85.00	15.00	0.00	0.00	1,037.62	3.11	0.00	0.00
53	Shariatpur	82.00	18.00	0.00	0.00	900.65	197.70	0.00	0.00
54	Patuakhali	0.00	100.00	0.00	0.00	0.00	1,767.20	0.00	0.00
56	Borguna	0.00	92.00	0.00	8.00	0.00	828.45	0.00	72.04
57	Rajshahi	0.00	0.00	100.00	0.00	0.00	0.00	1,886.73	0.00
58	Natore	0.00	0.00	100.00	0.00	0.00	0.00	1,553.16	0.00
59	Nawabganj	20.00	0.00	80.00	0.00	239.82	0.00	959.29	0.00
60	Naogaon	0.00	0.00	100.00	0.00	0.00	0.00	2,442.08	0.00
61	Pabna	10.00	0.00	90.00	0.00	205.22	0.00	1,846.97	0.00
62	Sirajganj	20.00	0.00	80.00	0.00	501.55	0.00	2,006.21	0.00
63	Rangamati	20.00	0.00	35.00	45.00	83.84	0.00	146.71	188.63
64	Bandarban	18.00	0.00	15.00	67.00	44.75	0.00	37.29	166.56
65	Khagrachari	25.00	0.00	35.00	40.00	95.33	0.00	133.46	152.52
	Bangladesh	52	10	36	2	61,277	38,161	2,174

**Requirement of Safe Water Sources by the Year 2000
(Excluding Private Contribution)**

Sl No	Name of the District	Total Requirement of Safe Water Sources Under Applied Tubewell Technology as of 2000				Existing Status of Safe Water Sources Considering the Possible Effect of GW Declination in the Year 2000				Further Requirement of Safe Water Sources Under Applied Tube Well Technology as of 2000			
		Shallow water Table area	Deep Aquifer	Shallow water Table area	Deep Aquifer	Low Water Table area	Problem Area	Low Water Table area	Problem Area	Shallow water Table area	Deep Aquifer	Low Water Table area	Problem Area
1	2	3	4	5	6	7	8	9	10	11	12	13	14
1	Dhaka	7788	0	23365	0	3543	0	2457	0	4245	0	20908	0
2	Narayanganj	17502	0	5834	0	7115	0	540	0	10386	0	5294	0
3	Narsingdi	21489	0	3211	0	12197	0	1521	0	9291	0	1690	0
4	Munshiganj	10944	0	7296	0	7466	0	0	0	3477	0	7296	0
5	Manikganj	7199	0	10799	0	5315	0	478	0	1883	0	10312	0
6	Gazipur	0	0	21417	0	0	0	3954	0	0	0	17463	0
7	Tangail	13597	0	31717	0	6912	0	4031	0	6685	0	27696	0
8	Jamalpur	8200	0	19134	0	4670	0	1163	0	3529	0	17971	1333
9	Sherpur	7698	0	8040	1368	4541	0	1572	35	3156	0	6468	0
10	Mymensingh	11855	0	47422	0	590	0	7097	0	6365	0	40325	0
11	Netrokana	17289	0	9309	0	9998	0	2578	0	7291	0	6731	0
12	Kishoreganj	28050	0	6157	0	15086	0	2698	0	12964	0	3459	0
13	Chittagong	42902	15710	1812	0	26416	5482	0	0	16487	10228	1812	400
14	Cox's Bazar	15507	5678	655	0	9742	2191	257	38	5764	3487	398	0
15	Comilla	39810	0	21536	0	21733	0	1148	0	18076	0	70288	0
16	Brahmanbaria	30714	0	1515	0	17210	0	613	0	13503	0	1003	0
17	Chandpur	25406	0	5203	0	16452	0	0	0	8953	0	5203	400
18	Noakhali	17721	14905	0	496	15810	3021	0	689	1911	11884	0	134
19	Laxmipur	17231	1958	0	391	12152	735	0	257	5079	1223	0	0
20	Feni	14485	2556	0	0	9610	1222	0	0	4884	1334	0351	1574
21	Sylhet	30122	0	982	1637	18057	0	631	63	12064	0	94	844
22	Moulavi Bazar	19642	0	633	844	13139	0	539	0	6502	0	850	0
23	Habijan	22798	0	949	0	15133	0	99	0	7664	0	400	0

24	Sunamganj	13409	13409	0	0	4775	6438	16	0	8634	6971	6187	0
25	Rangpur	23343	0	6972	0	13742	0	785	0	9600	0	3216	0
26	Kurigram	20902	0	3688	0	12879	0	472	0	8022	0	0	0
27	Lalmonirhat	14409	0	0	0	8720	0	0	0	5689	0	6391	0
28	Gaibandha	23417	0	6994	0	13233	0	603	0	10179	0	0	0
29	Nilphamari	19347	0	0	0	11064	0	0	0	8283	0	9546	0
30	Dinajpur	21517	0	11586	0	12667	0	2040	0	8849	0	1185	0
31	Thakurgaon	14030	0	1220	0	8898	0	35	0	5131	0	400	0
32	Panchagar	10834	0	0	0	7472	0	60	0	3362	0		
33	Bogra	13940	0	25888	0	6622	0	5176	0	7318	0	20712	0
34	Joypurhat	0	0	11511	0	0	0	1955	0	0	0	9556	0
35	Khulna	11723	6489	0	2721	10762	1913	0	384	961	4576	0	2337
36	Bagerhat	11868	3814	0	5510	13049	234	0	625	400	3580	0	4885
37	Satkhira	14593	2392	717	6220	13106	303	482	1020	1486	2089	235	5200
38	Jessore	14063	625	16563	0	8513	34	652	0	5549	591	15911	0
39	Jhenaidaha	3820	0	15281	0	2622	0	902	0	1198	0	14379	0
40	Megura	6008	0	4916	0	3970	0	393	0	2037	0	4523	0
41	Narail	9773	0	0	0	6658	0	0	0	3115	0	0	0
42	Kushtia	11120	0	1120	0	5645	0	2686	0	5475	0	8434	0
43	Chuadanga	7197	0	3875	0	4460	0	482	0	2737	0	3393	0
45	Meherpur	7023	0	369	0	5179	0	335	0	2843	0	34	0
44	Barishal	24030	8010	0	95	17125	5364	0	0	6905	2646	0	0
46	Jhalakathi	5738	3729	0	1967	5542	1885	0	0	196	1844	0	95
47	Perojpur	9839	4591	0	0	10083	1120	0	1306	400	3471	0	661
48	Bhola	0	22069	0	0	0	7535	0	0	0	15434	0	0
49	Faridpur	17144	0	5714	0	11228	0	224	0	5915	0	5490	0
50	Rajbari	3667	0	8557	0	2077	0	1660	0	1589	0	6897	0
51	Gopalganj	14851	1650	0	0	10431	178	0	0	4420	1472	0	0
52	Madaripur	13834	2441	0	0	9897	362	0	0	3937	2079	0	0
53	Shariatpur	12008	2636	0	0	9274	698	0	0	2734	1938	0	0
54	Patuakhali	0	19562	0	0	0	7719	0	0	0	11843	0	0
55	Borguna	0	11046	0	960	0	4967	0	267	0	6079	0	693

56	Rajshahi	0	0	25156	0	0	0	5910	0	0	0	19246	0
57	Natore	0	0	20708	0	0	0	3051	0	0	0	17657	0
58	Nawabganj	3197	0	12790	0	1611	0	3292	0	1586	0	9498	0
59	Naogaon	0	0	32561	0	0	0	6402	0	0	0	26159	0
60	Pabna	2736	0	24626	0	1385	0	5491	0	1351	0	19135	0
61	Sirajganj	6687	0	26749	0	3479	0	3140	0	3207	0	23609	0
62	Rangamati	1117	0	1956	2515	371	0	3364	542	746	0	400	1973
63	Bandarban	596	0	497	2220	667	0	1936	466	400	0	400	1754
64	Khagrachari	1271	0	1779	2033	615	0	2313	574	655	0	400	1459
	Bangladesh	817,000	144,170	508,790	28,977	514,605	51,401	85,242	6,266	305,068	92,769	429,005	23,742

Annex - K

Requirement of Water Sources By 2000

(Considering Private Contribution)

		Requirement by 2000	Equivalent Private Contribution*	Net Requirement
1.	Water Sources in SWT Area	305,068	198,000	107,068
2.	Water Sources in Deep Aquifer	92,769	-	92,769
3.	Water Sources in LWT Area	429,005	-	429,005
4.	Water Sources in Problem Area	23,742	-	23,742
Total		850,584	198,000	652,584

* One private tubewell is equivalent to 1/5th public tubewell. It is assumed that the effect of ground water table declination in private tubewells will be same as in public tubewells i.e. about 66% tubewell will be inoperative by the year 2000.

Government of the People's Republic of Bangladesh
Ministry of Local Govt. Rural Development
and Co-operatives
Local Govt. Division

Subject : Minutes of the meeting held in respect of Rural, Water Supply Project (GOB-4) and Rural sanitation Project, throughout the country.

A meeting was held on 27-07-96 (AD) under the Chairmanship of Local Government, Rural Development and Co-operative Minister Mr. Zillur Rahman in his office in respect of Rural Water Supply Project (GOB-4) throughout the country and Rural Sanitation Project. At list of the names of officers present at the meeting are shown in the Enc. Ka.

Subjects Discussed

1. Rural Water Supply Project throughout the country.

In the beginning the Secretary of the Local Govt. Division talked about the aim and object of the Project. He said that the Water supply to the rural Bangladesh was made through Rural Water Supply Project. To fulfillm the objective GOB-4 Project has been undertaken. During the last 20 years various Aid Organisation including UNICEF helped in this field . Presently we have no assurance of similar help but we hope to get it soon. He informed that about 50,000 tube-wells used to be installed annually, of which half used to be funded by the Government of Bangladesh, and rest half with the assistance of UNICEF. He also conveyed that to take a project in hand after due consultation with the foreign donor is time involving, but thinking about the seriousness of the water supply Bangladesh Government has taken over GOB-4 Project from GOB own budget. For this purpose cost involved with be 638 crores Taka and time taken will be Five (5) years- the PCP of GOB-4 has been sent to the Planning Commission for installation of 60 to 70 thousand tube-well annually the amount required will be taka 920 Crore. He also informed that if foreign assistance is made available, the burden on Bangladesh will be reduced. The Local Govt. Secretary apprised the meeting that Foreign Aid Organisation will not render assistance in any area in Bangladesh other than low lying areas. He also informed that the Project under consideration with donor agencies/organisation was discussed in Pre-ECNEC meeting but no decision could be taken there in respect of the rate of contribution. Later, the matter was discussed in the ECNEC meeting but in the absence of any decision regarding the Subsidy the Project did not receive full fledged approved. The Secretary of the LG Division also informed that for the purpose of water supply there was no other project except this. Because of the recent flood situation the need for tube-well is keenly felt in various areas but due to indecision regarding Subsidy in Tube-well and non fixation of the donors contribution, no tube-wells could be installed. Immediate decision is required to be taken in this regard.

2. In course of the discussion the Hon'ble Minister for LGRD and Cooperatives said that recently a new government has taken over power in the country and if the subsidy was reduced right at this moment it may create an embarrassing situation for the Government. He had discussed the matter with the Planning Commission. Planning Commission had agreed not to reduce the subsidy for the time being, he informed the meeting. He had said that a request should be made to the donor organisations through the Planning Commission and Economic Relations Division for not reducing the subsidy for at least next one year.
3. At this stage the Hon'ble Minister, remarked that the price of commodities go on rising progressively, and in that context, the increase in the price of tube-wells and in the quantum of donors' contribution would but seem quite reasonable. But for a new Government, reduction of subsidy or increase in the rate of contribution would bring forth criticism in various quarters. He fully agreed with the views of the Hon'ble State Minister that it was desirable that the rate of subsidy and contribution remained static at the present rate. He also remarked that in view of the suffering caused by floods in many areas of the country, it would not be wise to collect contribution at an increased rate from the beneficiaries.
4. In course of the discussion the Secretary, Economic Relation Division said that for expansion of the programme, it was necessary to increase the contribution of beneficiary. If this was progressively increased only then would be possible for the govt. to expand such programmes. In view of the recent flood the contribution may not be increased in the time being. The LG Division of the LGRD and Cooperative Ministry will give the guideline to fix the progressive rate of increase subsequently.
5. A member of the Planning Commission informed the meeting that with regard to this project the question of Foreign Funding continues to be under consideration without any interruption. Although on 6-6-96 the Project was raised in ECNEC meeting he is felt it could be placed to ECNEC again. He remarked that although the Foreign Donor Agencies raised objection regarding reduction of subsidy it should, in view of our compelling circumstances, be held in abeyance. If need be the proposal of the donors may be considered in the next fiscal year. He expected that the funding of the Project GOB-4 may be met from the lump grant.

Decision:

- 1) The current rate of subsidy for sinking the tube-well will remain in force.
- 2) The PCP for GOB-4 will be sent to the Planning Commission for placing before ECNEC.
- 3) The activities regardingn the installation of tube-well under project GOB-4 will continue to remain in force.

Discussed Subject: 2 Rural Sanitation Project

While discussing the preamble of the project, the Secretary Local Government Division said that so long the Rural Sanitation Project was implemented in three phases with the assistance of

UNICEF. From now on no assistance will come from UNICEF. Two million (20 Lakh) Sanitary latrines (two in each Thana) were produced at the production centres and sold to the public. A project entitled Rural Sanitation Project was sent to Planning Commission and it was subsequently discussed in the Pre-ECNEC meeting but as the subsidy was not reduced the Project proposal was sentback for re-examination.

2. Secretary Economic Relations Division expressed that there was no necessity of giving subsidy by the Government as the expense involved was much less and this work could easily be done through private sector. A Member of Planning Commission said if this project was implemented through private sector, the risk of price hike remained alive. Moreover, if the rate of subsidy was reduced, the people will deviate from using sanitary latrine, ease themselves here and there giving creating risk of epidemic . In this condition, government will have to spend more for protection from epidemic as compared to the payment of subsidy.
3. In the course of discussion the Hon'ble Minister said that we have to motivate people so that every household use the sanitary latrine Thereafter we may think of reduction of the subsidy.

Decision:

- Ka) Steps are to be taken to place the PCP of the Project before the ECNEC meeting.
- Kha) The present rate of subsidy of the Sanitary Latrine Project will continue to remain in force.
4. Thereafter the Chairman thanked everyone and declared the meeting closed.

Sd.
Mohd. Zillur Rahman
Minister
Date 5-8-96 Ad.

No. Pas-1/1 AD-9/96 (part-1)/537 (11)

Date 23-04-1400 (Bang)
7-8-1996 AD.

Copy sent for kind information and necessary action to:

1. Mr. A.H.M. Abdul Hye, Member, Planning Commission Shere Bangla Nagar, Dhaka
2. Dr. Mashiur Rahman, Secretary, Economic Relation Division Shere Bangla Nagar, Dhaka

3. Syed Alamgir Farook Chowdhury, Secretary, LG Division
4. Mr. Amin Uddin Ahmed, Chief Engineer, Department of Public Health and Engg., Dhaka
5. Syed Musharraf Hussain, Director General, LG Division
6. Mr. Syed Lutfur Rahman Chowdhury, Joint Secretary Local Government Division
7. Mr. Abdur Rahim Bhuiyan, Jt. Chief, Planning Commission Dhaka

Sent for kind information to:

- 1) Private Secretary to the Hon'ble Minister, Minister of Local Government, Rural Development and Cooperative.
- 2) Private Secretary to the Hon'ble State Minister, Ministry of Local Government, Rural Development and Cooperative.
- 3) Private Secretary to the Secretary, Ministry of Local Government
- 4) Personal Assistant to the Deputy Secretary, LG Division.

Brief Outline of Training Programmes

Provision has been made under the project for training of beneficiaries, different classes people or organisations for human resource development. To perform these training practically, module based training programmes will be conducted. Keeping in view the demand of related population group and organisations and for making proper modules and auxiliary training materials, suitable trainers and specialist consultants will be appointed. All activities of proposed Training Division will be coordinated centrally and the Executive Engineer of the concerned district will supervise the implementation. The regional Superintending Engineers will monitor the implementation of training program through constant supervision.

All activities relating to training will be conducted under the supervision and guidance of the Central Committee for Training located at the Directorate. The structure of the Committee shall be as under :

Committee on Training of the Directorate :

1. Additional chief Engineer (Planing)	Chairman
2. Superintending Engineer (Planning)	Member
3. Project Director	Member
4. UNICEF Representative	Member
5. Representative of WHO (BAN CWS-001)	
6. Executive Engineer (Training)	Member - Secretary

Training & re-orientation of Sub-assistant Engineer and equivalent officers & representatives will be held in the officer of the Regional Superintending Engineer, and with this object in view, a Training Unit, with related facilities will be formed under the supervision of the regional Superintending Engineer.

Training of Assistant Engineers and officers superior to them will be held centrally in Dhaka and the Training Division will conduct it under the supervision of the Project Director. There will be arrangements for all related facilities with a view to imparting proper training.

Annex - N

Status of UNICEF Supplied Transport in DPHE

Sl. No	Type of Vehicles	Running good	Running	Old Running Uneconomic	Total
1	Boat	-	-	2	2
2	Car	-	1	11	12
3	Jeep	10	2	4	16
4	Microbus	-	3	12	15
5	Pickup	-	-	27	27
6	Truck	5	1	16	21
Total		15	6	72	93

Annex - O

Estimated UNICEF Average Annual Staff Cost

Type of Post	No. of Posts	Estimated annual salary (US \$)	Estimated annual Dependency/Travel/Admin cost	Estimated Total amount Cost (US \$)
International Staff	3	210,000	84,000	294,000
National Staff	10	139,500	46,500	186,000
	Total	349,500	130,500	480,000

For 5 years $4,800,000 \times 5 = 2,400,000$ (US\$)

Annex-P.1

**Government of the Peoples Republic of
Bangladesh Ministry of Planning
Implementation, Inspection and Evaluation Division
Block No - 12, Sher-E-Bangla-Nagar, Dhaka**

No. Moni: B:/2023/69 - 498

Date

10-12-1996 (Eng)

17-08-1400 (Ban)

Subject :- Proceedings of the meeting on rationalisation of expenditure for Sanitation in rural areas, Hygiene development and Water Supply Project held on 19-11-96 under the chairmanship of the Secretary of IME division.

Proceedings of the meeting on rationalisation of expenditure of the above project of the Directorate of Public Health Engineering under the Local Government Division of the Ministry of Local Government, Rural Development and Co-operatives, held on 19-11-96 with the Secretary of the IME Division in the chair are sent herewith, for kind information and necessary action.

Sd/
(A. H. M. Farooq)
Director
Phone : 9123752

Distribution :

1. Secretary, Local Government Division, Bangladesh Secretariat, Dhaka.
2. Member (Physical infra-structure), Planning Commission, Sher-E-Bangla Nagar, Dhaka.
3. Chief Engineer, Department of Public Health Engineering, 12/C, Dilkhusa C/A, Dhaka.
4. Deputy Secretary, Co-Ordination, Economic Relations Division, Sher-E-Bangla Nagar, Dhaka.

IME Division
Ministry of Planning

**Proceedings of the meeting on nationalization of expenditure of the project
sewerage, Health Development and Water Supply in Rural Areas
under the Directorate of public Health Engineering held on 19 - 11 - 96,
with secretary of IME Division in the chair.**

A meeting was held on 19 - 11 - 96 with Mr. Md. Shahidul Islam, secretary IME, Division, in the Chair, in his office room, about the rationalization of the expenditure of the above project under the local government division of the ministry of L. G. R. D. The officers present in the meeting are last in Appendix - KHA(10)

Discussion :-

1. At the beginning of the meeting the representative of the ministry of the Local Government presented the project document, as requested by the chairman. He mentioned that it had not been possible to bring all rural people living in village areas under safe water and sanitation system. Formerly, steps are taken under five UNICEF - Assisted Projects to supply safe drinking water in all areas of the country including coastal area and low-water table areas. But these five project were completed during the last financial year. Later on the project in question was accepted for improvement of Rural Water Supply and sanitation system under the UNICEF - Bangladesh country programme (1996-2000) beginning July, 1996.
2. Under this project, special importance will be given to water supply and sanitation facilities in low-water table and coastal areas. At this stage the chairman wanted to know in detail about types of tube-wells such as Tara pump, P. S. F., V.S.S.T, S.S.T. etc. The representative of the DPHE gave elaborate description of the tube-wells. The chairman considered such works under physical construction of the Project mainly pertaining to research and development as collection of rain water, construction of reservoir, infiltration gallery, gravity feed water system; Water source, latrines, smokeless chulas in UP Health Centres, and proposed include them under a separate head named "Research & Development (R & D)." Representatives of Local Government Ministry and implementing authority, DPHE agreed to it. In the course of elaborate discussion of the research activities, the issue of making Smokeless chula (Health) got special importance. The Chairman told the meeting about his experience of distributing this chula through D.A.E while he was the Director General of the Directorate of Agricultural Extension, and told that it would be proper to introduce in the rural areas through different experimental methods, only the proved and most acceptable chulas. Because, it would be necessary to satisfactorily motivate the rural people that this type of Chula could be made very easily and cook more food by burning less fuel. Otherwise the villagers will use their traditional Chulas. He mentioned that in some placed of north bengal people innovated technology for construction of smokeless chulas by using their own resource. This technology can be used in other places as well.
3. The Director General wanted to know the number of Tube-wells throughout the Bangladesh under Public and Private sectors. The Additional Chief Engineer, DPHE, the implementing authority, informed that there are about 980,000 Tube-wells in the government and 1.6 million tube-wells in the Private Sector. Most of the non-government tube-wells were used for drawing water from shallow-water levels. In this respect, a small number of tube-well had been proposed for Shallow Water Table Areas. On the other hand, there is proposal in this Project for Sinking 6,000 Deep tube-wells, 50,800 Tara tube-wells, and 2,400 Tara-2 tube-wells in low water zones and the Coastal areas.

4. The Chairman, commenting on the PCP mentioned that the general objectives and definite goals mentioned in the first page of the PCP needs to be revised, because, namely the part that the Project Water supply, Sanitation and Hygiene Development has been undertaken only on the basis of the Declaration of Child Right Conference and Earth Summit of 1992. But, it should at first be cleared that this Project has been taken considering the need of the people of the country. All the members present in the meeting agreed to it.
5. **Decisions :** After a detailed discussion of manpower, infra-structure, transport needs and costs of investment, the following decisions were taken.
 - (a) Out of proposed 162 posts, only the posts necessary for implementing the Project under considerations should be retained.
 - (b) The responsibility of the proposed post of Project Director in the rank of Superintending Engineer, may be discharged by one of the two (2) existing Additional Chief Engineer or a Superintending Engineer may be entrusted with the job.
 - © Instead of showing a lump-sum in "other sub-head of the budget, it can be shown in under different heads as Training, Research & Development, Establishment expenditure etc.
 - (d) Car has to be omitted from proposed transport. Apart from this, a report on the present condition of the transports collected under different Projects of UNICEF should be attached to the PCP in brief form.
 - (e) As per discussion of the meeting, the objective of the Project in the PCP needs to be corrected and the goal of the project is mentioned at the first in the following way "The Project is necessary for overall development of Health and Hygiene status of the people in Bangladesh".
 - (f) Pre-examining the expenditure on manpower and other organs with the representative of IME Division, the representatives of the implementation authority shall decide reasonable expenditure.
 - (g) After thread-bare discussion with the representatives of the IME Division, the representatives of DPHE, examined the expenditure of the expenditure of the manpower and other investment head and accordingly and later on the Project cost/expenditure estimate was fixed at TK. 29,800 Lakh by curtailing TK. 342.39 Lakh.

Sd-
(Md. Shahidul Islam)
Secretary.

**Head/Organwise Expenditure Proposed by Organisations
and Recommended by IME Division.**

(Lakh Tk.)

Name of the Head/Org.	Proposed by organisation		Recommended by IME Division			Remarks
	Quality	Cost	Quantity	Cost	Saving	
1. Manpower	152	434.56	150	420.92	3.64	Out of Proposed 42 posts of Asstt. Engineer, 8 has to be curtailed. Because the project will not be implemented in 8 districts as these are shallow water layers. More over, in the office of Assistant Chief Engineer, the posts of 1 driver, 1 Record Keeper, 1 L.D.A. and 1 M.L.S.S. have to be abolished and Asstt. Chief Engineers officer shall be merged with the office of the Project Director. Car has to be excluded from transport.
2. Transport (Car - 1 Jeep - 10 Speed Boat - 4)	15	192.00	14	172.00	20.00	
3. Furniture, Equipment and Machinery	Lump	46.00	Lump	42.25	3.75	
4. Miscellaneous (office rent, maintenance of transport & conveyance etc.)	Lump	1338.00	Lump	1100.00	238.00	
5. Scholarship	Lump	617.00	Lump	550.00	67.00	
Total		22,142		21,800	342	2.5%

Total saving 342.39 lakh. (Three hundred forty two lakh thirty nine thousand taka only)

Annex - P.4

**List of Officers attending Expenditure Appropriation meeting
held on 19/11/96 AD in the IME Division**

Local Govt. Division

Mr. Md. Serajul Islam, Deputy Chief.

Planning Commission

Mr. Abdus Sobhan Bhuiyan, Deputy Chief.

Economic Relation Division

Mr. Md. Shafiqul Islam, Deputy Chief.

Public Health Engineering Department

1. Mr. M.A.K.M. Shafiq, Additional Chief Engineer.
2. Mr. Fariduddin Ahmad Mia, Superintending Engineer (Planning).
3. Mr. Amanullah Al Mahmud, Executive Engineer.

I.M.E.D.

1. Dr. Md. Sanauallah, Director General.
2. Mr. A.K.M. Farrooq, Director.
3. Mr. Md. Latfur Rahman Tarafdar, Asstt. Director.

Annex - Q

Government of People's Republic of Bangladesh
Planning Commission
Physical Infrastructure Division

No BC/TS/General 2/17/65

Date : 15-12-1400 Bang
29-03-1997 AD

**Subject : Proceedings of Pre-ECNEC/Inter Ministry meeting held on 26-11-1400
Bang/10-03-1997 AD.**

A meeting of the Pre - ECNEC/Inter Ministry was held on 26-11-1400 Bang/10-03-1997 AD at the Conference Room of the Planning Commission under the chairmanship of Dr Fazlul Hasan Yusuf member of the Physical Infrastructure Divisions of the Planning Commission to consider the under mentioned projects forwarded herewith for kind information and further necessary action

Name of the Project	Sponsoring Ministry/Division Organisation
1. Collection of machinery for handling container alongwith Gantry Crane	Ministry of Shipping/ Chittagong Port Authority
2. Setting up of 10 Boat Centers at different places in the country.	Ministry of Shipping/Bangladesh Inland Water Transport Authority (IWTA).
3. Reconnect the railway line on Jessore-Benapole branch line.	Ministry of Communication/Bangladesh Railway
4. Arranging 15 Engines and 500/1000 wagons for bringing up Madlyapara Hard Rock and Baropukuria coal and its transportation	- do -
5. Collection of 10 MGDE Locomotives (amendmend)	- do -
6. Environment Development Project Dhaka (2nd amendmend)	Local Government Division/Dhaka City Corporation
7. Water Supply and Sanitation Project in Gopalganj Municipality & Thana	Local Government Division/Dept of Public Health and Engineering
8. Sanitation and Hygiene Development and Water Supply Project in Rural areas	Local Government Division/Local Govt Engg Dept
9. Technical Assistance Project of Multipurpose Cyclone Shelter Construction	Local Government Division/Local Govt Engineering Department

Sd
 (Dr. Mohd. Mohiuddin Abdullah)
 Asst. Chief
 Phone : 911 7001

Distribution

- 1 Secretary, Ministry of Finance, Bangladesh Sachibalaya, Dhaka.
2. Secretary, Economic Relations Division, Shere-E-Banglanagar Dhaka
3. Secretary, I.M I U Shere Banglanagar, Dhaka (for attention : Mr Nesar Ahmad, Director General)
- 4 Secretary, Ministry of Establishment, Sachibalaya, Dhaka.
- 5 Secretary, Science and Technology Division, Sachibalaya, Dhaka.
- 6 Secretary, Ministry of Forest & Environment, Sachibalaya, Dhaka
7. Secretary, Ministry Women & Children Affairs, Sachibalaya, Dhaka
8. Secretary, Ministry of Shipping, Sachibalaya, Dhaka
9. Secretary, Roads & Railways Div , Sachibalaya, Dhaka.
- 10 Secretary, Local Government Division, Sachibalaya, Dhaka.
11. Director General, Bangladesh Railway, Rail Bhaban, A Ghani Road, Dhaka
- 12 Chirman, National Board of Revenue, Segun Baghicha, Dhaka
- 13 Divisional Chief, Programme Division, Shere Bangla Nagar, Dhaka.
- 14 Chairman , Chittagong Port Authority, Chittagong.
- 15 Chairman, BIWTA 141-143 Motijheel C/A, Dhaka
16. Chief Planning Officer, Bangladesh Railway, Rail Bhaban, Abdul Ghani Road, Dhaka.
17. Chief Engineer, Dhaka City Corporation, Fulbaria, Dhaka.
18. Chief Engineer, Public Health Engineering Dept 12/B, Dilkusha C/A, Dhaka
19. Chief Engineer, Local Government Engineering Dept. Agargaon, Dhaka.

Copy for king information to :

1. Private Secretary to the Member (Physical Infra-Structure) Planning Commission, Dhaka.
- 2 Personal Officer to Divisional Head (Physical Infra-Structure) Planning Commission, Shere Banglanagar, Dhaka
3. Personal Officer to Joint Chief (Railway) Planning Commission Shere Banglanagar, Dhaka
- 4 Personal Officer to Joint Chief, Planning Commission Shere Banglanagar, Dhaka

Sd
(Dr. Mohd. Mohiuddin Abdullah)
Assistant Chief

Annex - R

Govt. of the Peoples Republic of Bangladesh
Planning Commission
Physical Infra-Structure Division

**Subject : Proceedings of pre ECNEC/Inter Ministerial meeting held on 26-11-1400
 Ban/10-03-1997 AD.**

A meeting of the Pre ECNEC/Inter Ministry was held on 26-11-1400 Bang/10-03-1997 at the conference Room of the Planning Commission under to presidency of Dr. Fazlul Hasan Yusuf, Member of Inter Structure Division of the Planning Commission to consider the following subjects. A list of the officer present at the meeting is given at Annexure "Ka".

Name of the Project	Sponsoring Ministry/Division Organisation
1. Collection of machinery for handling container alongwith Gantry Crane	Ministry of Shipping/ Chittagong Port Authority
2. Setting up of 10 Boat Centers at different places in the country.	Ministry of Shipping/Bangladesh Inland Water Transport Authority (IWTA).
3. Reconnect the railway line on Jessore-Benapole branch line.	Ministry of Communication/Bangladesh Railway
4. Arranging 15 Engines and 500/1000 wagons for bringing up Madlyapara Hard Rock and Baropukuria coal and its transportation	- do -
5. Collection of 10 MGDE Locomotives (Amended)	- do -
6. Environment Development Project Dhaka. (2nd amendmend)	Local Government Division/Dhaka City Corporation
7. Water Supply and Sanitation Project in Gopalganj Municipality & Thana	Local Government Division/Dept of Public Health and Engineering
8. Sewerage, Health Development and Water Supply Project in Rural areas.	Local Government Division/Local Govt. Engg Dept
9. Multipurpose Cyclone Centre Construction project and technical assistance project	Local Government Division/Local Govt Engineering Department.

9. **Agenda - 8:**

- (a) Name of the Project . Sanitation, Hygiene Development and Water Supply in Rural Areas
- (b) Enterprising Ministry/Division . Local Government, Rural Development and Co-operative Ministry/Local Government Division.
- © Implementing establishment . Directorate of Public Health and Engineering
- (d) Estimated Cost:-
- | | | | |
|-------------|-----|----------|------|
| Total | Tk | 21800.05 | Lakh |
| GOB | Tk | 8989.90 | Lakh |
| Project Aid | Tk. | 12810.15 | Lakh |
- (e) Source of Finance : Grant from UNICEF and Governmental of Bangladesh Contribution

9.1 Presentation

Introducing the project the representative of the concerned Ministry said that the basic objectives of the project were as under:

- to increase the rate of the use of sanitary latrines from 45% (1995) to 80% ;
- to improve personal hygiene practice, specially the habit of washing hands with soap/ash before taking meal and after defecation upto 80% ;
- to bring 9.88 million people under water supply system by sinking 52,000 Tube well and thereby bringing the number of users per Tube well from existing (1995) 252 to 190 persons in the low water table areas,

to bring 1.37 million people under water supply by sinking 7860 Tube wells and finding other sources of water in the coastal areas, thereby bringing the number of users per Tube well to 175 from 185 persons (1995)

to bring 0.19 million people under safe water supply system by sinking 2675 Tube wells and ring wells in Chittagong Hill Tract and other hilly areas and thereby bringing the number of users per Tube well source of water to 70 from 84 persons (1995).

He also mentioned that UNICEF assistance will be available for the project

9.2 Discussion

9.2.1 At the outset of the discussion the Deputy Chief of the concerned wing informed that, in Bangladesh - UNICEF country programme, there is an allotment of 31.44 million U.S. Dollars for the project, which includes a general fund of \$4.50 million and supplementary fund of \$26.94 million. In reply to a question whether supplementary fund would be available from UNICEF, the representative of the ERD said that, according to the discussion of the JGUAG meeting, UNICEF will collect the supplementary fund from other donor organisations. In case of failure to get supplementary fund from S.D.C and DANIDA as before, the same will be collected from Japan, Portugal, Germany and other countries. Previous experience is that although UNICEF failed to collect supplementary fund at the initial stage, it becomes possible later on. It is expected that UNICEF will be able to collect supplementary fund for this project. The meeting unanimously agreed that ERD will take necessary steps to collect supplementary fund of UNICEF.

9.2.2 It was reported at the meeting that of the UNICEF grand Tk. 7132.65 lakh (55.67% of project aid) was for physical construction (Hard ware) and Tk. 5677.50 lakh (44.32% of project aid) was for other investment, counselor, Training etc. (Soft ware). In reply to the question whether expenditure on Hard ware could be increased by curtailing that on soft ware has been given as per discussion with UNICEF. The meeting opined that discussion may again be held with UNICEF in this regard.

9.2.3 While discussing about training under the project, the representative of the implementing authority said that, it was not possible at this stage to compile separate T A PP according to the remark of the Physical Infra-structural Division. The meeting agreed that outlines of different Training programmes should be mentioned in the PCP. regarding making of smokeless chulla in rural areas and training relating to it under this project, the Committee expressed the opinion that, such large establishments as need large chullas and use firewood (i.e. Hostel, BDR, Police Camp, Hotel, Restaurant etc.) may be supplied with smokeless chulla devised by B C S I R on a limited scale.

9.2.4 Regarding transport, representative of the organisation said that there was insufficiency of transport in the Directorate of Public Health Engineering, and many of the existing ones needed replacement. After discussion it was decided in the meeting to place seven jeeps and Three (3) speed boats under the project. It was also agreed to attach an enclosure with the PCP describing present condition of the vehicles along with necessary information collected information connected by UNICEF under different projects.

9.2.5 On question of manpower the meeting agreed that according to the recommendation of the IMED, Senior Superintending Engineer will take full time responsibility of Project Director. According to the recommendations of IMED the posts of 1 Driver, 1 Record-Keeper, 1 Lower Division Assistant and 1 M L S S. in the office of Assistant Chief Engineer, were to be curtailed and the office of the Assistant Chief Engineer, would be merged with that of the Project Director. Moreover, staff of different division

of the Directorate of Public Health Engineering under UNICEF Assistance Projects (completed in June, 1996) will be as follows:

Natore Office, Stores Division	—	22
Monitoring Division	—	5
R & D Division	—	22.

All these positions should be transferred to revenue budget on emergency basis. Regarding proposal for 42 posts of Assistant Engineers in 42 districts under this project, the representative of the implementing authority said that the proposal for creating these 42 posts are at present under consideration of revenue Budget. So, it was necessary to retain them under development project until the posts are created because there are Executive Engineers in there 42 districts. The meeting agreed that until the creation of 42 new posts of Assistant Engineer under revenue Budget, they will remain under this project.

- 9.2.6 In respect of furniture, equipment and machinery, the Deputy Chief of the Wing said that among the computers to be collected under the project, 1 (one) computer can be allocated to use of the Physical-planning, Water-Supply and Housing Wing of the Planning Commission. This proposal was accepted in the meeting. It was also mentioned in the meeting that the expenditure of office on different heads like furniture, equipment & machinery, office rent, conveyance, maintenance of transport, repair & fuel, incidental, CD VAT, increase in price shall remain confined within the fund recommended by IMED. Moreover, in the Annual Implementation Matrix of the PCP the amount of GOB and project grant should be shown separately.
- 9.2.7 It was also discussed in the meeting that the distribution of expenditure shown under the 'head' of consultant/advisor shall be mentioned in the PCP. It was also told in the meeting that the number of range sets and kits given for Tube-well supervision and training programme shall have to be shown separately.

9.3 Resolutions

The project was recommended for approval under the following conditions :-

- (a) Economic Relations Division will take necessary steps to collect supplementary fund from UNICEF
- (b) Discussion shall have to be resumed with UNICEF whether fund for physical construction could be increased by curtailing expenditure on other investment fund as allocated by UNICEF.
- (c) Brief outlines of different Training Programmes proposed, have to be mentioned in the PCP
- d) Construction of Smokeless Chula, invented by BCSIR are to be included in the Project in limited numbers only in places where large Chulas and wood are used as fuel (for example in hostel, BDR and Police Camps, hotels, restaurants etc.)
- e) There will be provision for 7 Jeeps and 3 Speed boats under the Project. An enclosure is to be attached to the PCP describing the details and present condition of transport under various projects of UNICEF.
- f) The status of the Project Director will be that of a Senior Superintending Engineer and the Project Director will be a full time employee.
- g) The posts of 1 Motor Car Driver, 1 Record Keeper, 1 Lower Division Asst and 1 MLSS of Asstt Chief Engineer have to be abolished and the Office of the Asst. Chief Engineer will be merged with the Project Director
- h) In Natore Office, the manpower strength of Store Branch will be 22, for Monitoring Cell will be 5 and for R & D Cell will be 22 .
- i) The post of 42 new Asstt Engineers swill be included in the Project until creation of these posts under the revenue budget
- j) Out of the collected Computers of the project one Computer could be given for use in the Physical Planning Wing of the Planning Commission, Water Supply and Housing Wing. Besides, furniture, fittings equipment's, machinery of transport, repairs, fuel and other incidental expenses, CD VAT, expenses for price exallation will be confirmed only to the expenditure recommended by IMED.

- k) In Annual Implementation Matrix, amount of GOB and Project grand are to be shown separately in the PCP.
- l) The expenses shown as Consultants Fees are to be included in the PCP
- m) The number of Range sets and Kits given during supervision of tube-well are to be mentioned separately in the PCP

Roads and Railway Division, Bangladesh Railway

1. Mr. M. A. Rahim, Additional Director General/R.N.
2. Mr. A T M. Nurul Islam, Chief Planning Officer
3. Mr. Md. Mizanur Rahman Majumdar, Economist

Ministry of Shipping

1. Mr. Mahmudul Hasan, Joint Chief.
2. Mr. Abdur Jazzaque, Deputy Chief.

Local Government Division

1. Mr. Md. Hefazuddin, Director General.
2. Mr. Serajul Islam, Deputy Chief.

Finance Division

1. Mr. A. C. Khan, Deputy Secretary (Development)

I.M.E.D.

1. Mr. Arshuda Khan, Director
2. Ms. Husna Ara Begum, Deputy Director
3. Ms. Rokeya Begum, Deputy Director
4. Mr. Anjoan Kumar Biswas, Asstt. Director.

Economic Relations Division

1. Mr. Golam Rasul, Senior Asstt. Secretary
2. Mr. Anuarul Kabir Bhuiya, Asstt. Chief
3. Mr. Md. Liaqat Alli, Research Officer.

Chittagong Port Authority.

1. Mr. Hashim Shahjahan, Member (Engineering).
2. Mr. Mohammad Aminul Hoque, Director.

Bangladesh Inland Water Transport Authority

1. Mr. Alauddin Ahmed, Chief Engineer.
2. Mr. M. A. Chowdhury, Member (Engineering)
3. Mr. Shamsheer Ali, Director (Planning)
4. Mr. Md. Rafiqul Alam, Deputy Director (Planning).

Public Health Engineering Department

1. Mr. Amin Uddin Ahmad, Chief Engineer
2. Mr. S A K M. Shafiq, Additional Chief Engineer
3. Mr. Fariduddin Ahmed, Superintending Engineer

Local Government Engineering Department

- 1 Mr Saroj Kumar Sarker, Superintending Engineer (Incharge)
- 2 Mr. Md. Delawar Hossain, Asstt Chief Engineer.

Planning Commission

1. Mr Jahurul Islam, Joint Chief, Physical Planning, Water Supply Housing Wing
- 2 Ms. Syeda Regeya Khatun, Joint Chief, Railway Transportation Wing
- 3 Mr Abbas Ali Miah, Dy Chief, Physical Planning Water Supply and Housing Wing.
4. Mr Abdul Sobhan Bhuiyan, Deputy Chief, Physical.
5. Ms Saadia Begum, Asstt. Chief, Physical Planning, Water Supply and Housing Wing.
- 6 Dr. Md. Mohiuddin Abdullah, Asstt Chief Railway Wing.
- 7 Mr A. M. M. Wahiduzzaman, Asstt Chief Programme, Division.
- 8 Mr Khandker Ahsan Hossain, Research Officer.

Annex - S

Government of People's republic of Bangladesh
Office of the Chief Engineer
Department of Public Health Engineering
Public Health Engg. Bhavan
175-178 Kakrail, Dhaka-1000

Memo 1472/J · SHA : PRA · A :

Date Dhaka 29/4/1997 Ad
16/01/1404(Bang)

From : Chief Engineer
Public Health Engineering Department
Government of Bangladesh
Dhaka

To : Secretary
Ministry of Local Government, Rural Development and Co-operative
Local Government Division
Government of Bangladesh
Dhaka

Subject: Reorganization of Rural Sanitation, Hygiene Development and Water
Supply Project (GOB-UNICEF)

Reference: No PC/TS/General-2/97/65

Date 29/3/1997 AD.
15/12/1403 (Bang)

According to the decision taken at the Pre-ECNEC meeting held on 10/3/1997 AD, the Project
Concept Paper has been submitted herewith for necessary action

Ends: 5 Copies of Project Concept Paper.

Signed/
[Amin Uddin Ahmad]
Chief Engineer
Department of Public Health Engg
Bangladesh, Dhaka

DHARITRI 3/98
WATSAN.OUT

